



Air Conditioners

# Technical Data



Individual branch selector for VRV® heat recovery (Individual BS box)



EEDEN11-200

BSVQ100-250P8



Air Conditioners

# Technical Data



Individual branch selector for VRV® heat recovery (Individual BS box)



EEDEN11-200

BSVQ100-250P8

# TABLE OF CONTENTS

## BSVQ-P8

1	Specifications .....	2
	Technical Specifications .....	2
	Electrical Specifications .....	2
2	Safety device settings .....	3
3	Options .....	3
4	Dimensional drawing & centre of gravity .....	4
	Dimensional drawing .....	4
	Centre of gravity .....	6
5	Piping diagram .....	7
6	Wiring diagram .....	8
	Wiring diagram .....	8
7	Sound data .....	9
	Sound pressure spectrum .....	9

# 1 Specifications

1-1 Technical Specifications				BSVQ100P8V1B	BSVQ160P8V1B	BSVQ250P8V1B
Power input	Cooling	Nom.	kW	0.005		
	Heating	Nom.	kW	0.005		
Casing	Material			Galvanised steel plate		Galvanised steel
Dimensions	Unit	HeightxWidthxDepth mm		207x388x326		
Weight	Unit		kg	12		15
Piping connections	Outdoor unit	Liquid	Type	Braze connection		
			OD mm	9.5		
		Gas	Type	Braze connection		
			OD mm	15.9	15.9 (1)	22.2
	Discharge gas	Type	Braze connection			
		OD mm	12.7	12.7 (1)	19.1	
	Indoor unit	Liquid	Type	Braze connection		
			OD mm	9.5 (1)	9.5	
Gas		Type	Braze connection			
		OD mm	15.9 (1)		22.2	
Sound absorbing thermal insulation				Foamed polyurethane, frame resisting needle felt		

Standard Accessories : Insulation pipe cover;

Standard Accessories : Attached piping;

Standard Accessories : Clamps;

Standard Accessories : Installation manual;

1-2 Electrical Specifications				BSVQ100P8V1B	BSVQ160P8V1B	BSVQ250P8V1B
Power supply	Phase			1~		
	Frequency		Hz	50		
	Voltage			220-240		
	Voltage range	Min.	%	-10		
Max.		%	10			
Total circuit	Minimum circuit amps (MCA)		A	0.1		
	Maximum fuse amps (MFA)		A	15		

## Notes

- (1) In case of connection with a 20~50 type indoor unit, match to the size of the field pipe using the attached pipe. Connection between the attached pipe and the field pipe must be brazed.
- (2) Voltage range: units are suitable for use on electrical systems where voltage supplied to unit terminal is not below or above listed range limits.
- (3) Maximum allowable voltage range variation between phases is 2%.
- (4) MCA/MFA:  $MCA = 1.25 \times FLA$
- (5)  $MFA \leq 4 \times FLA$
- (6) Next lower standard fuse rating minimum 15A
- (7) Select wire size based on the value of MCA
- (8) Instead of a fuse, use a circuit breaker
- (9) In case of connecting with indoor unit capacity index between 150 and 160, match to the size of the field pipe using the attached pipe. Connection between the attached pipe and the field pipe must be brazed.
- (10) In case of connecting with a 200 type indoor unit or capacity index more than 160 and less than 200, match to the size of the field pipe using the attached pipe. Connection between the attached pipe and the field pipe must be brazed.

## 2 Safety device settings

BSVQ-P8	
Model	Safety devices
	PC board fuse
BSVQ100PV1	250V 3.15A
BSVQ160PV1	250V 3.15A
BSVQ250PV1	250V 3.15A
BSVQ36PVJU	250V 3.15A
BSVQ60PVJU	250V 3.15A
BSVQ96PVJU	250V 3.15A

4D057956B

## 3 Options

BSVQ-P8				
OPTION LIST				
No	Item	BSVQ100P	BSVQ160P	BSVQ250P
1	PCB for multi tenant		DTA114A61	
2	Sound reduction for BSVQ box	EKBSVQLNP (see note 2)		

4TW31159-1A

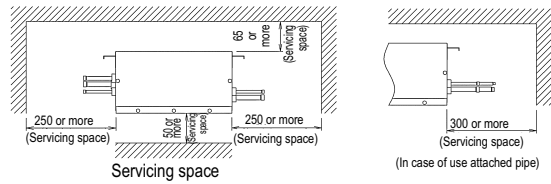
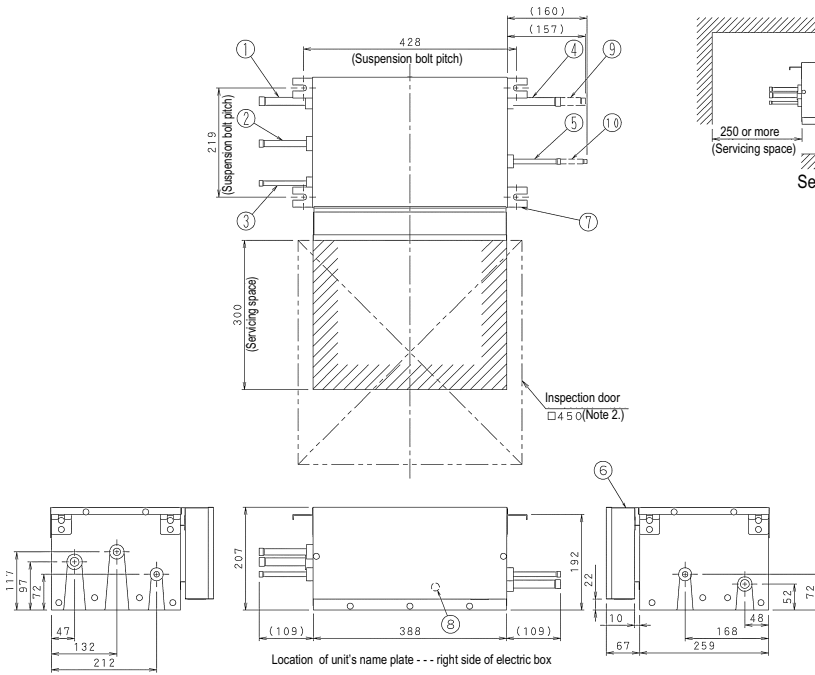
**NOTE**

- 1 All options are kits.
- 2 Only available for standard BSVQ boxes (not possible for central BSV4Q).  
Allows to reduce operating sound of BSVQ-box (requires 1 sound kit per BSVQ-box).

# 4 Dimensional drawing & centre of gravity

## 4 - 1 Dimensional drawing

BSVQ100PV1



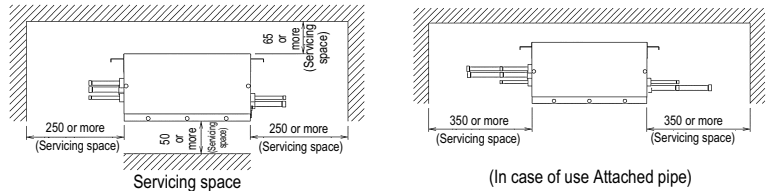
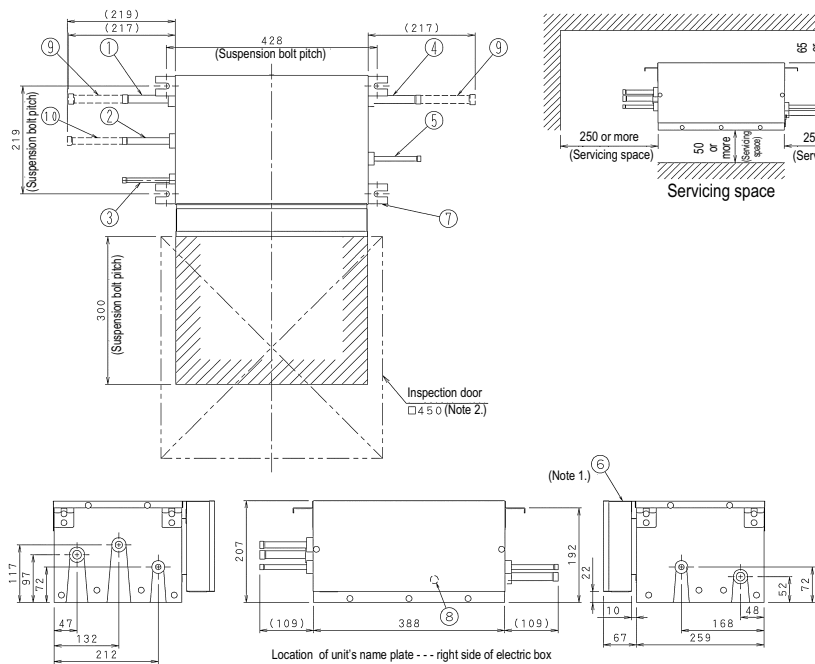
Nr	Name	Description
1	Suction gas pipe connection port	ø15.9mm brazing connection
2	HP/LP gas pipe connection port	ø12.7mm brazing connection
3	Liquid pipe connection port	ø9.5mm brazing connection
4	Gas pipe connection port	ø15.9mm brazing connection
5	Liquid pipe connection port	ø9.5mm brazing connection
6	Electric box (note 1.)	
7	Suspension brackets	M8 ~M10
8	Grounding terminal	M4
9	Attached pipe (1) (Note. 3)	ø12.7mm brazing connection
10	Attached pipe (2) (Note. 3)	ø6.4mm brazing connection

**NOTES**

- 1 Electric box can also be fixed on the other side of the unit.
- 2 Be sure to install an inspection door at electric box side.
- 3 Attached pipe is only used in case of connecting with a 20~50 class indoor unit.
- 4 Small sound of refrigerant will be made, which may be disturbing.  
Do not install it at the place such as bedroom under roof.

3D056011

BSVQ160PV1



Nr	Name	Description
1	Suction gas pipe connection port	ø15.9mm brazing connection
2	HP/LP gas pipe connection port	ø12.7mm brazing connection
3	Liquid pipe connection port	ø9.5mm brazing connection
4	Gas pipe connection port	ø15.9mm brazing connection
5	Liquid pipe connection port	ø9.5mm brazing connection
6	Electric box (note 1.)	
7	Suspension brackets	M8 ~M10
8	Grounding terminal	M4
9	Attached pipe (1) (Note. 3)	ø19.1mm brazing connection
10	Attached pipe (2) (Note. 3)	ø15.9mm brazing connection

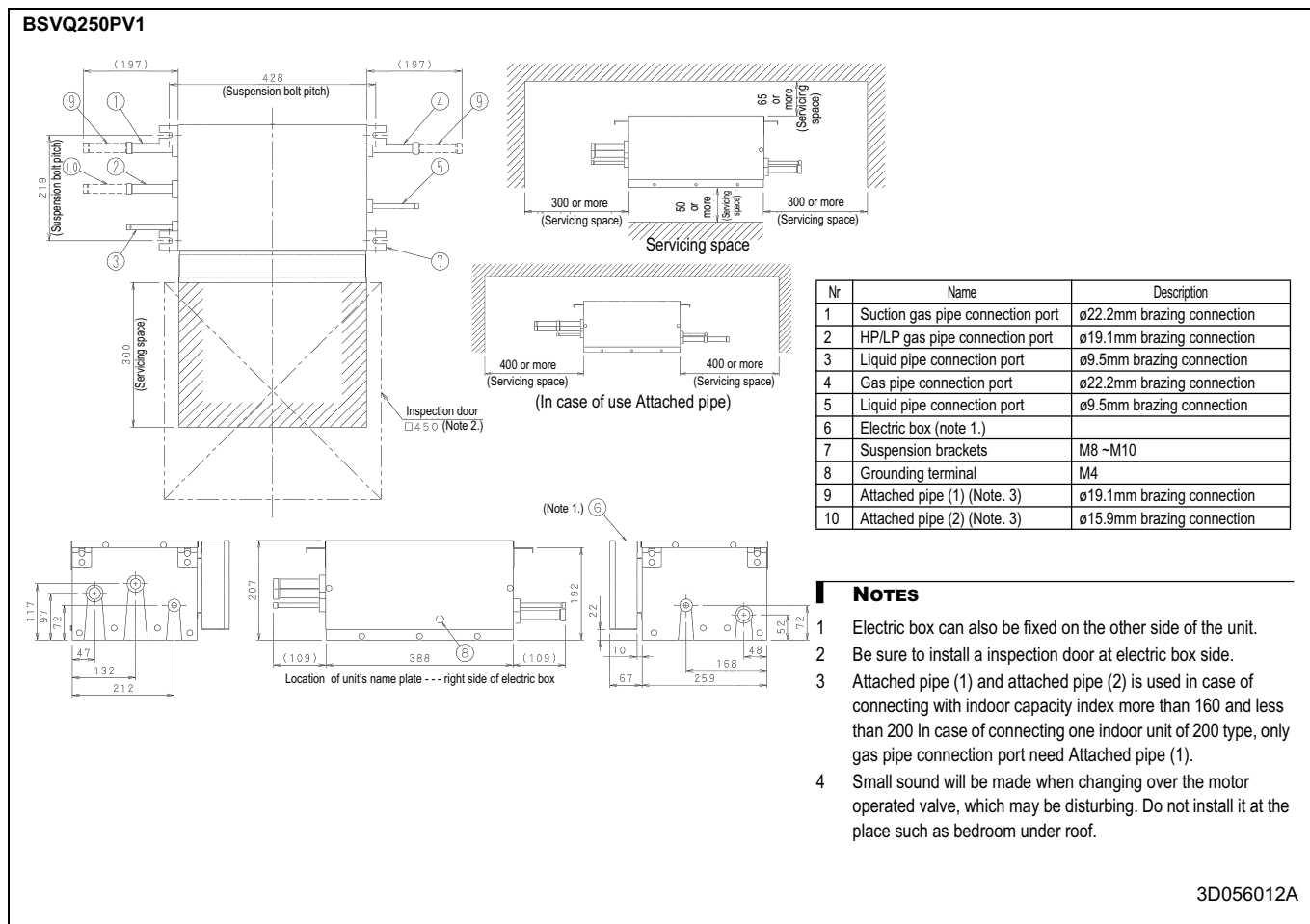
**NOTES**

- 1 Electric box can also be fixed on the other side of the unit.
- 2 Be sure to install an inspection door at electric box side.
- 3 Attached pipe is only used in case of connecting with indoor unit capacity index 150 or more and 160 or less.
- 4 Small sound of refrigerant will be made, which may be disturbing.  
Do not install it at the place such as bedroom under roof.

3D058004

## 4 Dimensional drawing & centre of gravity

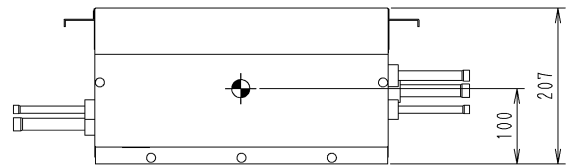
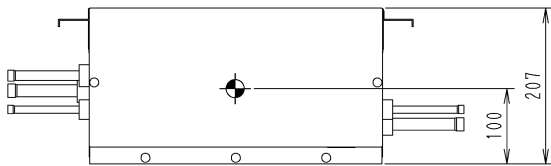
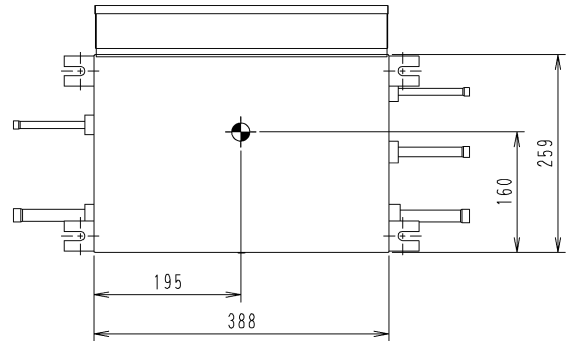
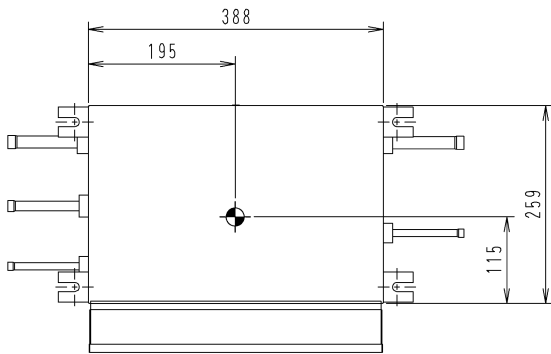
### 4 - 1 Dimensional drawing



## 4 Dimensional drawing & centre of gravity

### 4 - 2 Centre of gravity

BSVQ100,160PV1

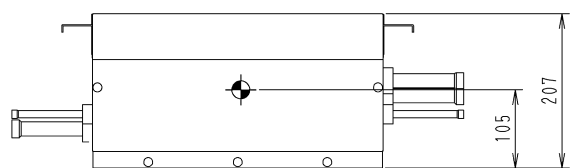
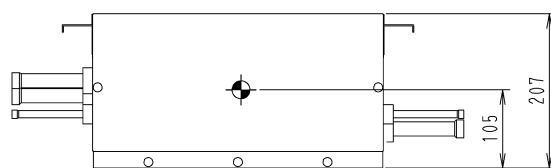
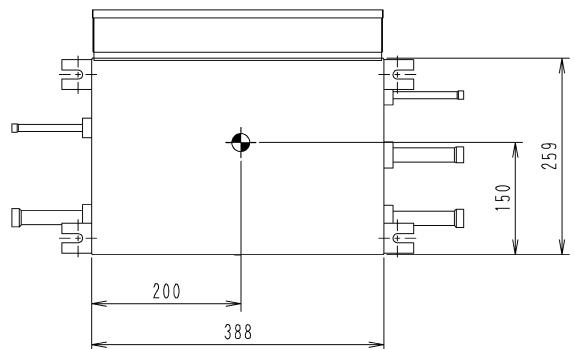
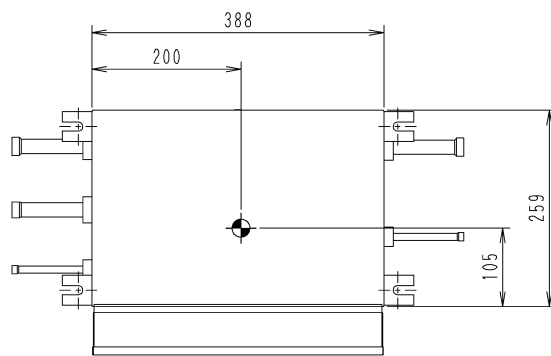


In case of the electrical box on the standard side of the unit

In case of the electrical box on the other side of the unit

3D058131

BSVQ250PV1



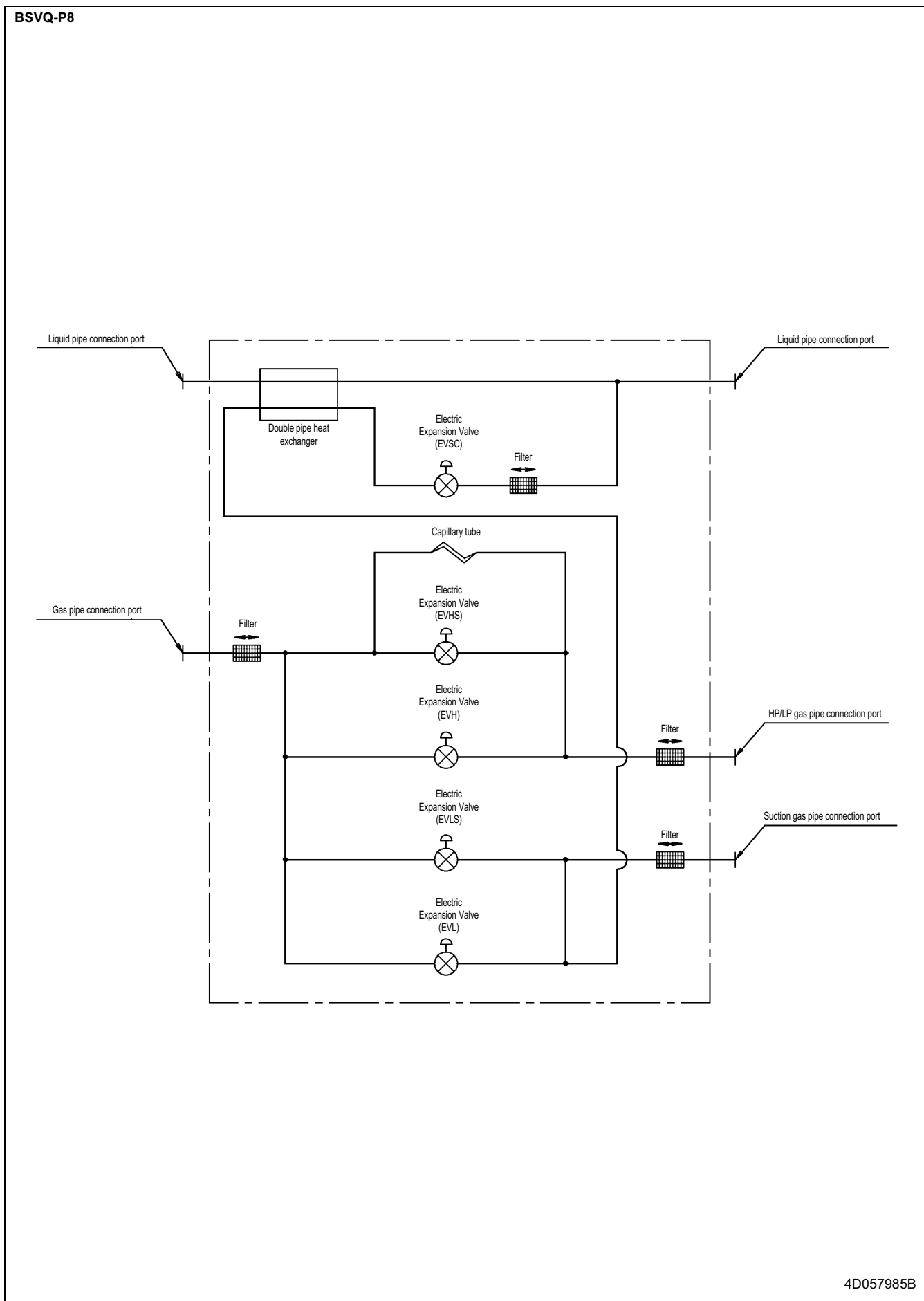
In case of the electrical box on the standard side of the unit

In case of the electrical box on the other side of the unit

3D058132

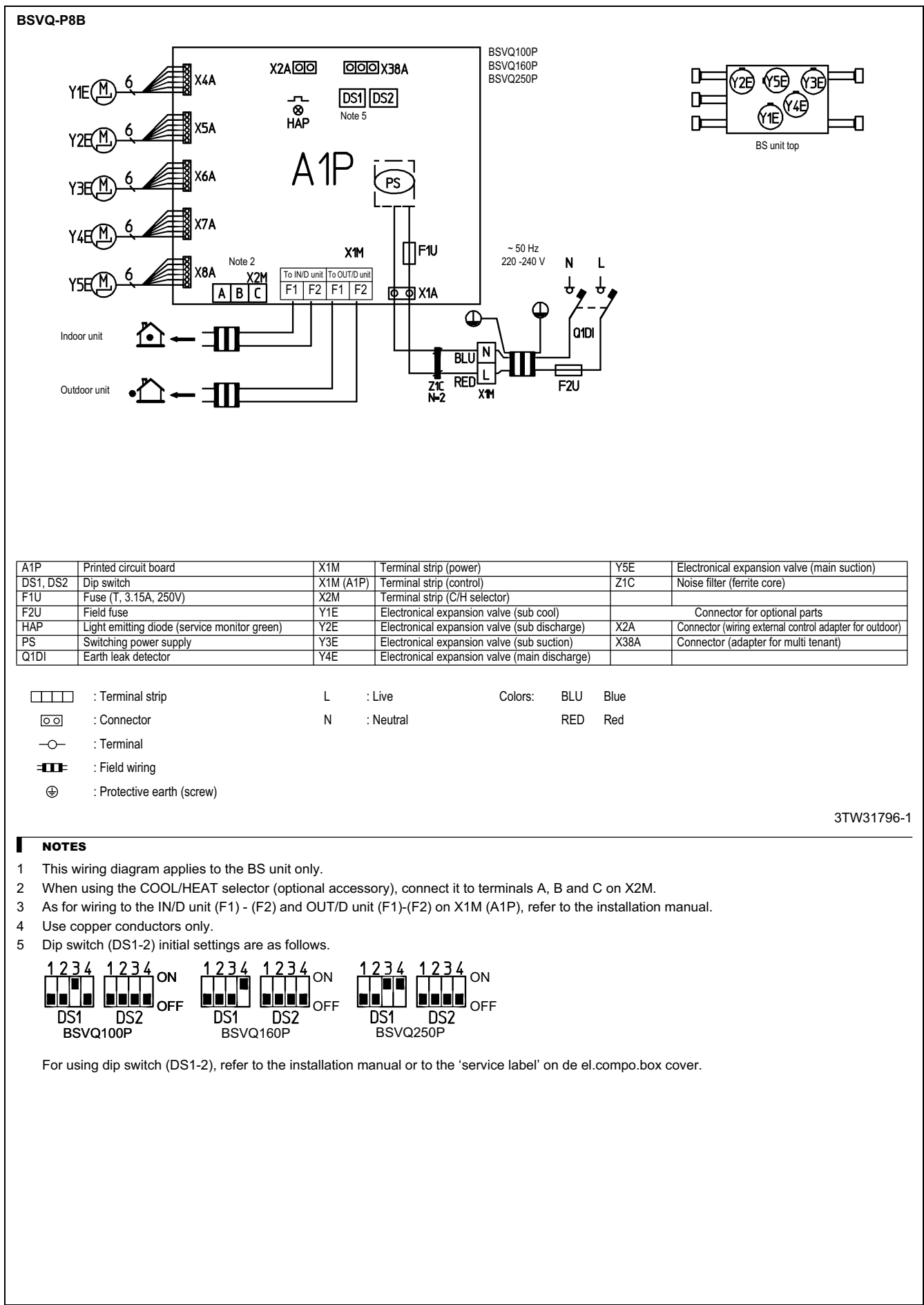


## 5 Piping diagram



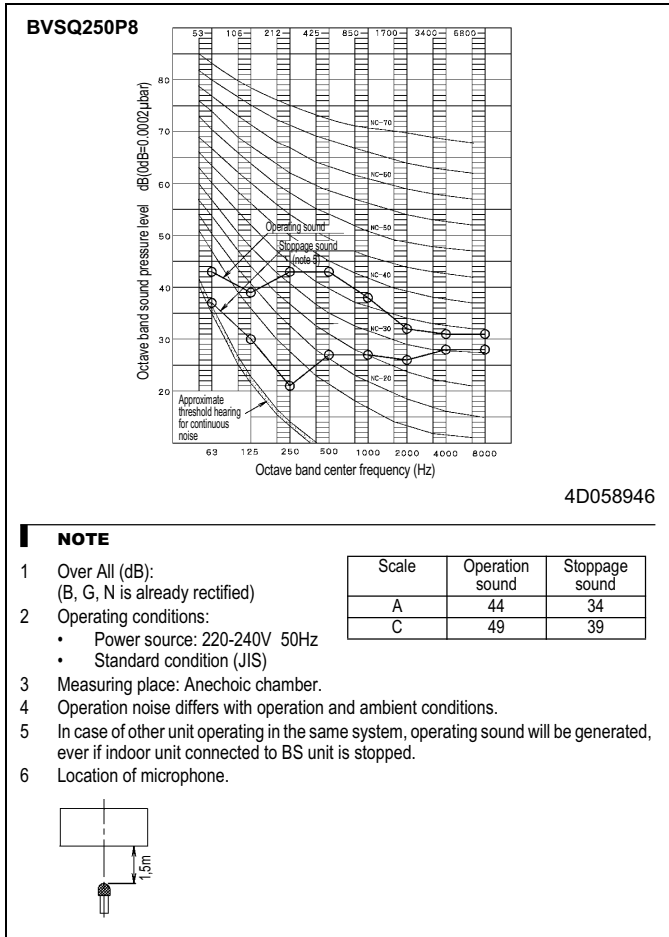
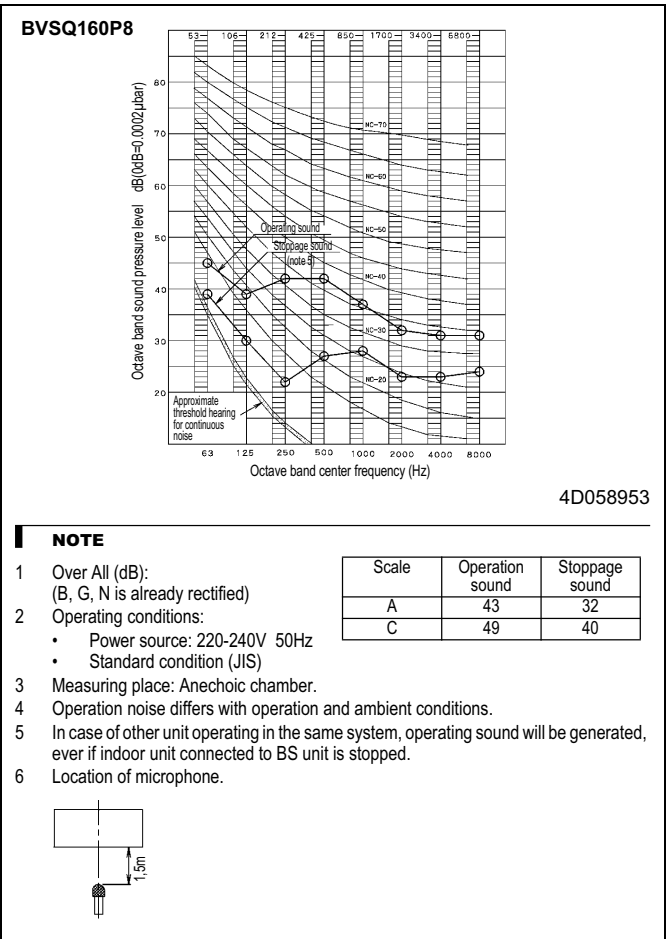
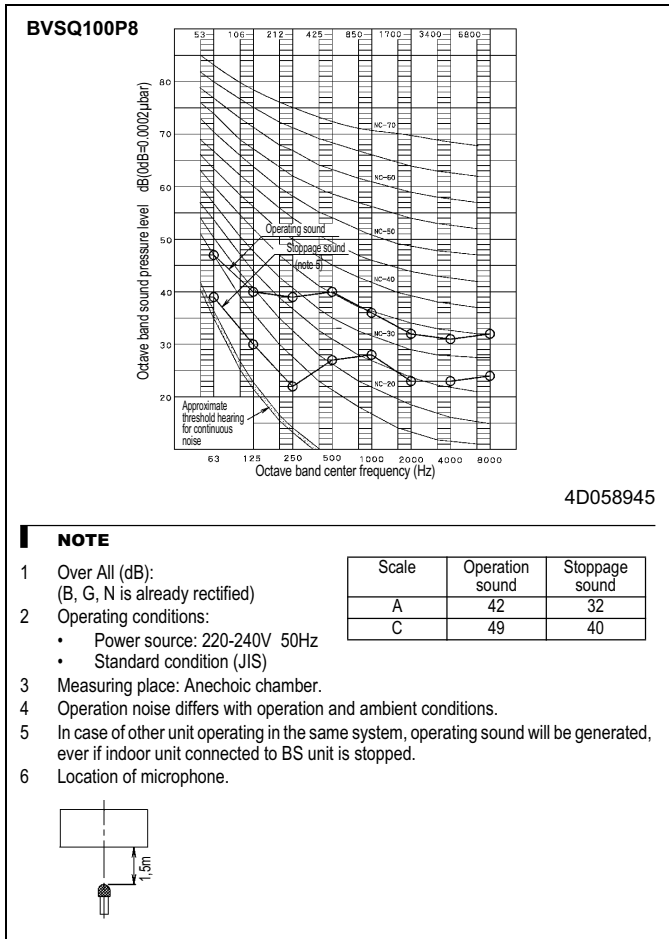
# 6 Wiring diagram

## 6 - 1 Wiring diagram



# 7 Sound data

## 7 - 1 Sound pressure spectrum



In all of us,  
a green heart



Daikin's unique position as a manufacturer of air conditioning equipment, compressors and refrigerants has led to its close involvement in environmental issues. For several years Daikin has had the intention to become a leader in the provision of products that have limited impact on the environment. This challenge demands the eco design and development of a wide range of products and an energy management system, resulting in energy conservation and a reduction of waste.

VRV® products are not within the scope of the Eurovent certification programme.



The present publication is drawn up by way of information only and does not constitute an offer binding upon Daikin Europe N.V. Daikin Europe N.V. has compiled the content of this publication to the best of its knowledge. No express or implied warranty is given for the completeness, accuracy, reliability or fitness for particular purpose of its content and the products and services presented therein. Specifications are subject to change without prior notice. Daikin Europe N.V. explicitly rejects any liability for any direct or indirect damage, in the broadest sense, arising from or related to the use and/or interpretation of this publication. All content is copyrighted by Daikin Europe N.V.

Daikin products are distributed by: