

## Individual Branch Selector for VRV Heat Recovery

### BSVQ-P8



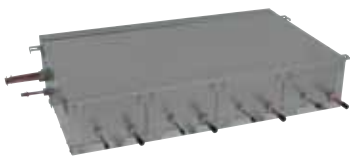
BSVQ100P8

- › High comfort levels: individual control and change over of 1 group of indoor units
- › Maximum design flexibility because individual and multi boxes can be combined in one system
- › Low built-in height
- › No drain piping needed
- › Allows multi tenant applications (option PCB required)

				BSVQ100P8	BSVQ160P8	BSVQ250P8
Power input	Cooling	Nom.	kW	0.005		
	Heating	Nom.	kW	0.005		
Maximum number of connectable indoor units				6	8	
Maximum capacity index of connectable indoor units				$15 < x \leq 100$	$100 < x \leq 160$	$160 < x \leq 250$
Casing	Material			Galvanised steel plate		Galvanised steel
Dimensions	Unit	HeightxWidthxDepth	mm	207x388x326		
Weight	Unit			12	15	
Piping connections	Outdoor unit	Liquid	Type/OD mm	Braze connection/9.5		
		Gas	Type/OD mm	Braze connection/15.9	Braze connection/15.9	Braze connection/22.2
		Discharge gas	Type/OD mm	Braze connection/12.7	Braze connection/12.7	Braze connection/19.1
	Indoor unit	Liquid	Type/OD mm	Braze connection/9.5	Braze connection/9.5	
		Gas	Type/OD mm	Braze connection/15.9		Braze connection/22.2
		Gas	Type/OD mm	Braze connection/15.9		Braze connection/22.2
Sound absorbing thermal insulation				Foamed polyurethane, frame resisting needle felt		
Power supply	Phase/Frequency/Voltage		Hz/V	1~/50/220-240		
Total circuit	Maximum fuse amps (MFA)		A	15		

## Multi Branch Selector for VRV Heat Recovery

### BSV4/6Q-PV



BSV4Q100PV

- › Rapid installation resulting from less brazing points and wiring
- › High comfort levels: individual control and change over of up to 4 or 6 groups of indoor units
- › Maximum design flexibility because individual and multi boxes can be combined in one system
- › Low built-in height
- › No drain piping needed

				BSV4Q100PV	BSV6Q100PV	
Power input	Cooling	Nom.	kW	0.020	0.030	
	Heating	Nom.	kW	0.020	0.030	
Maximum number of connectable indoor units				24	36	
Maximum number of connectable indoor units per branch				6		
Number of branches				4	6	
Maximum capacity index of connectable indoor units				400	600	
Maximum capacity index of connectable indoor units per branch				100		
Casing	Material			Galvanised steel plate		
Dimensions	Unit	HeightxWidthxDepth	mm	209x1,053x635	209x1,577x635	
Weight	Unit			60	89	
Piping connections	Outdoor unit	Liquid	Type/OD mm	Braze connection/12.7	Braze connection/15.9	
		Gas	Type/OD mm	Braze connection/28.6		
		Discharge gas	Type/OD mm	Braze connection/19.1	Braze connection/28.6	
	Indoor unit	Liquid	Type/OD mm	Braze connection/9.5		
		Gas	Type/OD mm	Braze connection/15.9		
		Gas	Type/OD mm	Braze connection/15.9		
Sound absorbing thermal insulation				Foamed polyurethane, frame resisting needle felt		
Power supply	Phase/Frequency/Voltage		Hz/V	1~/50/220-240		
Total circuit	Maximum fuse amps (MFA)		A	15		