

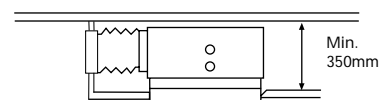


F X Y S P

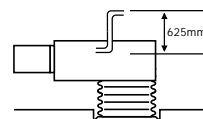
CONCEALED CEILING UNIT

- High external static pressure facilitates unit use with flexible ducts of varying lengths
- Low sound pressure level - 28dBA. The quiet operation of this model is ideal for exclusive stores and offices
- Blends unobtrusively with any interior décor

- When using suction panel, unit requires only 350mm of ceiling space



- Drain-up pump with lift up to 625mm fitted as standard



- The air suction direction can be altered from rear to bottom suction
- The switch box can be reached from the side or from the bottom side of the unit for easy servicing
- Long life filter fitted as standard



BRC1C517



BRC4C62/64



BRC2A51



BRC3A61

High flexibility for a wide variety of applications



FXYSP - KA7V19

Nominal cooling capacity				kW	2.2	2.8	3.6	4.5	5.6	7.1	9.0	11.2	14.0
Nominal heating capacity				kW	2.5	3.2	4.0	5.0	6.3	8.0	10.0	12.5	16.0
Power input	Cooling	W		110		114	127	143	189	216	246	321	
	Heating	W		90		94	107	123	169	196	226	301	
Power supply				1 ~, 50Hz, 230V									
Dimensions	Unit	HxWxD	mm	300x550x800			300x700x800		300x1,000x800		300x1,400x800		
	Decoration panel	HxWxD	mm	55x650x500			55x800x500		55x1,100x500		55x1,500x500		
Weight	Unit	kg		30		30	31	41	51		52		
	Decoration panel	kg		3		3.5	3.5	4.5	6.5		6.5		
Casing				galvanised steel plate									
Colour	Decoration panel			white 10Y9/0.5									
Sound pressure level	High	dB(A)		32	33	33	35	35	37	38	40		
	Low	dB(A)		28	28	29	31	30	31	33	35		
Sound power level				dB(A)		50	51	56	58	56	55	56	65
Air flow rate	High	m³/h		540	570	690	900	1,260	1,620	1,680	2,280		
	Low	m³/h		390	420	540	660	930	1,200	1,230	1,680		
Air filter				resin net with mold resistant									
Temperature control				microprocessor thermostat for cooling and heating									
Piping connections	Liquid	Flare	mm	Ø 6.4				Ø 9.5			Ø 9.5		
	Gas	Flare	mm	Ø 12.7				Ø 15.9			Ø 19.1		
	Drain	mm		VP25, external diameter 32, internal diameter 25									
Sound absorbing thermal insulation				foamed polyurethane									
Safety devices				PC board fuse, fan motor thermal fuse, drain pump fuse									

- Notes:
- Nominal cooling capacities are based on: indoor temperature: 27°CDB, 19°CWB • outdoor temperature: 35°CDB • equivalent refrigerant piping: 8m • level difference: 0m
 - Nominal heating capacities are based on: indoor temperature: 20°CDB • outdoor temperature: 7°CDB, 6°CWB • equivalent refrigerant piping: 8m • level difference: 0m
 - Capacities are net, including a deduction for cooling (an addition for heating) for indoor fan motor heat
 - The sound pressure values are mentioned for a unit installed with rear suction

ACCESSORIES

FXYSP - KA7V19

Wired remote control			BRC1C517, BRC2A51, BRC3A61							
Infrared remote control		Cooling only	BRC4C64							
		Heat pump	BRC4C62							
Decoration panel			BYBS32DJW1		BYBS45DJW1		BYBS71DJW1		BYBS125DJW1	
Service access panel			KTBJ25K36W		KTBJ25K56W		KTBJ25K80W		KTBJ25K160W	
Auxiliary electric heater *1,3		Model	240V/220V		KEA25K32VE		KEA25K50VE		KEA25K63VE	
		Capacity	kW	0.75		1.2		1.4		2.1
High efficiency filter 65% *2			KAFJ252L36		KAFJ252L56		KAFJ252L80		KAFJ252L160	
High efficiency filter 90% *2			KAFJ253L36		KAFJ253L56		KAFJ253L80		KAFJ253L160	
Filter chamber for bottom suction			KAJ25L36D		KAJ25L56D		KAJ25L80D		KAJ25L160D	
Filter chamber rear suction			KAJ25L36B		KAJ25L56B		KAJ25L80B		KAJ25L160B	
Air suction canvas			KSA-25K36		KSA-25K56		KSA-25K80		KSA-25K160	
Screening door/blind board			KBBJ25K36		KBBJ25K56		KBBJ25K80		KBBJ25K160	
Air discharge adapter for round duct			KDAJ25K36		KDAJ25K56		KDAJ25K71		KDAJ25K140	

- Notes:
- *1. A wiring adapter (KRP1B61) per indoor unit is required if installing an electric heater.
 - *2. If installing a high efficiency filter in the ceiling mounted built-in unit, an assembly chamber for either bottom or rear suction is required.
 - *3. An electric heater cannot be used for VRV system cooling only.