



Air Conditioning Technical Data

Ceiling mounted corner cassette



EEDEN15-204

FXKQ-MA

TABLE OF CONTENTS

FXKQ-MA

1	Features	2
2	Specifications	3
	Technical Specifications	3
	Electrical Specifications	4
3	Safety device settings	5
4	Options	6
5	Capacity tables	7
	Cooling Capacity Tables	7
	Heating Capacity Tables	8
6	Dimensional drawings	9
7	Centre of gravity	10
8	Piping diagrams	11
9	Wiring diagrams	12
	Wiring Diagrams - Single Phase	12
10	Sound data	13
	Sound Pressure Spectrum	13
11	Air flow patterns	14
	Air Flow Pattern - Heating	14

1 Features

1-way blow unit for corner installation

- Compact dimensions, can easily be mounted in a narrow ceiling void (only 220mm ceiling space required, 195 with panel spacer, available as accessory)
- Optimum air flow conditions are created by either downward air discharge or frontal air discharge (via optional grille) or a combination of both
- Standard drain pump with 500mm lift increases flexibility and installation speed



Inverter



Home leave operation



Fan only



Draught prevention



Auto cooling-heating changeover



Ceiling soiling prevention



Vertical auto swing



Fan speed steps



Dry programme



Air filter



Weekly timer



Infrared remote control



Wired remote control



Centralised control



Auto-restart



Self diagnosis



Drain pump kit

2 Specifications

2-1 Technical Specifications				FXKQ25MA	FXKQ32MA	FXKQ40MA	FXKQ63MA	
Cooling capacity	Nom.		kW	2.8 (1)	3.6 (1)	4.5 (1)	7.10 (1)	
Heating capacity	Nom.		kW	3.2 (2)	4.0 (2)	5.0 (2)	8.00 (2)	
Power input - 50Hz	Cooling	Nom.	kW	0.066		0.076	0.105	
	Heating	Nom.	kW	0.046		0.056	0.085	
Power input - 60Hz	Cooling	Nom.	kW	0.069		0.092	0.120	
	Heating	Nom.	kW	0.049		0.072	0.100	
Dimensions	Unit	Height	mm	215				
		Width	mm	1,110		1,310		
		Depth	mm	710				
Weight	Unit		kg	31		34		
Casing	Material			Galvanised steel plate				
Decoration panel	Model			BYK45FJW1		BYK71FJW1		
	Colour			White				
	Dimensions	Height	mm	70				
		Width	mm	1,240		1,440		
		Depth	mm	800				
	Weight			kg	8.5		9.5	
Heat exchanger	Type			Cross fin coil				
	Rows	Quantity		2		3		
	Fin pitch		mm	1.75				
	Face area		m ²	0.180		0.226		
	Stages	Quantity		11				
	Fan	Type			Sirocco fan			
Quantity			1					
Air flow rate - 50Hz		Cooling	High	m ³ /min	11	13	18	
			Low	m ³ /min	9	10	15	
Air flow rate - 60Hz		Cooling	High	m ³ /min	11	13	18	
			Low	m ³ /min	8.5	10	13	
Fan motor	Quantity			1				
	Model			3D12H1AN1V1		3D12H1AP1V1		4D12H1AJ1V1
	Output	High	W	15		20		45
	Drive			Direct drive				
Air filter	Type			Resin net with mold resistance				
Sound pressure level	Cooling	High	dBA	38.0		40.0		42.0
		Low	dBA	33.0		34.0		37.0
Refrigerant	Type			R-410A				
	Control			Electronic expansion valve				
Piping connections	Liquid	Type		Flare connection				
		OD	mm	6.35		9.52		
	Gas	Type		Flare connection				
		OD	mm	12.7		15.9		
	Drain			VP25 (O.D. 32 / I.D. 25)				
Heat insulation			Foamed Polyethylene					
Temperature control				Microprocessor thermostat for cooling and heating				
Safety devices	Item	01		Fuse				
		02		Fan motor thermal fuse				
Control systems	Infrared remote control			BRC4C61				
	Simplified wired remote control for hotel applications			-				
	Wired remote control			BRC1D52 / BRC1E52A/B				

Standard Accessories : Operation manual;

Standard Accessories : Installation manual;

Standard Accessories : Paper pattern for installation;

Standard Accessories : Clamps;

Standard Accessories : Insulation for hanger bracket;

Standard Accessories : Positioning jig for installation;

Standard Accessories : Drain hose;

Standard Accessories : Clamp metal;

2 Specifications

Standard Accessories : Insulation for fitting;
 Standard Accessories : Sealing pads;
 Standard Accessories : Screws;
 Standard Accessories : Washer;
 Standard Accessories : Air outlet blocking pad;

2

2-2 Electrical Specifications				FXKQ25MA	FXKQ32MA	FXKQ40MA	FXKQ63MA
Power supply	Name		VE				
	Phase		1~				
	Frequency	Hz	50/60				
	Voltage	V	220-240/220				
Voltage range	Min.	%	-10				
	Max.	%	10				
Current - 50Hz	Minimum circuit amps (MCA)		A	0.3		0.5	
	Maximum fuse amps (MFA)		A	15			
	Full load amps (FLA)	Total	A	0.2		0.4	
Current - 60Hz	Minimum circuit amps (MCA)		A	0.4		0.5	
	Maximum fuse amps (MFA)		A	15			
	Full load amps (FLA)	Total	A	0.3		0.4	

Notes

(1) Cooling: indoor temp. 27°CDB, 19°CWB; outdoor temp. 35°CDB; equivalent piping length: 7.5m (horizontal)

(2) Heating: indoor temp. 20°CDB; outdoor temp. 7°CDB, 6°CWB; equivalent refrigerant piping: 7.5m (horizontal)

Capacities are net, including a deduction for cooling (an addition for heating) for indoor fan motor heat.

Voltage range: units are suitable for use on electrical systems where voltage supplied to unit terminal is not below or above listed range limits.

Maximum allowable voltage range variation between phases is 2%.

MCA/MFA: MCA = 1.25 x FLA

MFA ≤ 4 x FLA

Next lower standard fuse rating minimum 15A

Select wire size based on the value of MCA

Use a circuit breaker instead of a fuse.

3 Safety device settings

3 - 1 Safety Device Settings

FXKQ-MA

		25	32	40	63
FXMQ-MA	Safety devices				
	PC board fuse	250V 5A	250V 5A	250V 5A	250V 5A
	Fan motor thermal fuse	°C 146 ^{s3}	146 ^{s3}	-	-
	Fan motor thermal protector	°C -	-	Off: 120 ^{s5} (On: 105 or less)	Off: 120 ^{s5} (On: 105 or less)
Drain pump thermal fuse	°C 145	145	145	145	

3D034597L

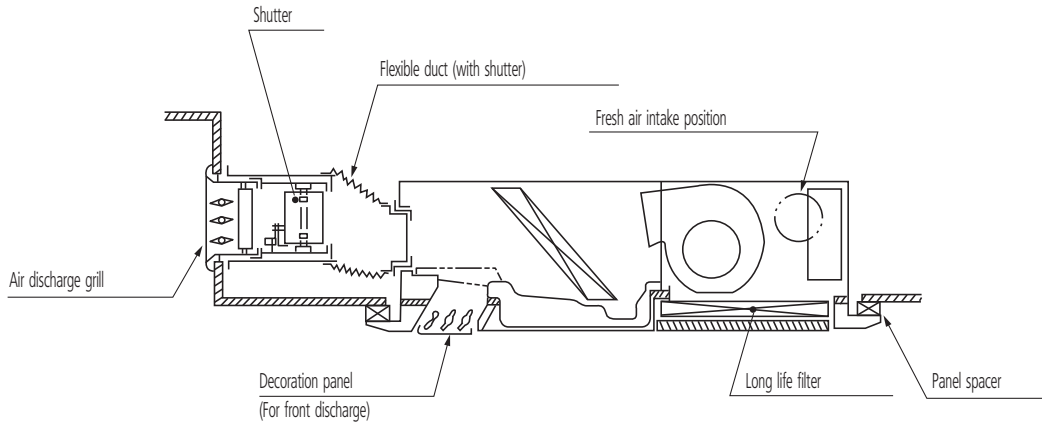
4 Options

4 - 1 Options

4

	FXKQ25MA	FXKQ32MA	FXKQ40MA	FXKQ63MA
DECORATION PANEL		BYK45FJW1		BYK71FJW1
PANEL SPACER		KPBJ52F56W		KPBJ52F80W
LONG LIFE REPLACEMENT FILTER		KAFJ521F56		KAFJ521F80
AIR DISCHARGE GRILL		K-HV7AW		K-HV9AW
AIR DISCHARGE BLIND PANEL		KDBJ52F56W		KDBJ52F80W
FLEXIBLE DUCT (WITH SHUTTER)		KFDJ52F56		KFDJ52F80

3D037081A



FXKQ-MA

No.	Item	Type		FXKQ-MA
1	Remote control	Infrared	H/P	BRC4C61
			C/O	BRC4C63
		Wired		BRC1D52 - BRC1E52A/B
2	Simplified remote control			-
3	Remote control for hotel use			-
4	Adapter for wiring			KRP1B61
5-1	Wiring adapter for electrical appendices (1)			KRP2A61
5-1	Wiring adapter for electrical appendices (2)			KRP4AA51
6	Remote sensor			KRCS01-1B
7	Installation box for adapter PCB.			-
8	Central remote control			DCS302CA61
8-1	Electrical box with earth terminal (3 blocks)			KJB311AA
9	Unified on/off controller			DCS301BA61
9-1	Electrical box with earth terminal (2 blocks)			KJB212AA
9-2	Noise filter (for electromagnetic interface use only)			KEK26-1A
10	Schedule timer			DST301BA61
11	Intelligent touch controller			DCS601C51
12	Intelligent touch manager			DCM601A51
13	External control adapter for outdoor unit (must be installed on indoor units)			DTA104A61
14	Simplified remote control (with operation mode selector button) (note 7)			BRC2E52C7
15	Simplified remote control (without operation mode selector button) (note 7)			BRC3E52C7
16	Digital input adapter (note 8)			BRP7A51

NOTES

- Installation box (No. 7) is necessary for each adapter marked *.
- Up to 2 adapters can be fixed for each installation box.
- Only one installation box can be installed for each indoor unit.
- Up to 2 installation boxes can be installed for each indoor unit.
- Installation box (No. 7) is necessary for second adapter.
- Installation box (No. 7) is necessary for each adapter.
- Included languages are:
 Language pack 1: English, German, French, Dutch, Spanish, Italian and Portuguese.
 With PC cable EKPCAB3 in combination with the updater PC software, you can additionally change the language to:
 Language pack 2: English, Bulgarian, Croatian, Czech, Hungarian, Romanian and Slovenian.
 Language pack 3: English, Greek, Polish, Russian, Serbian, Slovak and Turkish.
- Only possible in combination with simplified remote control BRC2/3E52C7.

3D034600K

5 Capacity tables

5 - 1 Cooling Capacity Tables

FXKQ-MA

TC: Total Capacity; kW - SHC: Sensible capacity; kW

Unit size	Nominal capacity	Outdoor air temp.	Indoor air temperature													
			14.0WB		16.0WB		18.0WB		19.0WB		20.0WB		22.0WB		24.0WB	
			20.0WB		23.0WB		26.0WB		27.0WB		28.0WB		30.0WB		32.0WB	
			°CDB	TC	SHC	TC	SHC	TC	SHC	TC	SHC	TC	SHC	TC	SHC	TC
25	2.8	35.0	1.9	1.9	2.3	2.2	2.6	2.3	2.8	2.4	3.0	2.5	3.0	2.4	3.1	2.3
32	3.6	35.0	2.4	2.2	2.9	2.5	3.4	2.6	3.6	2.7	3.8	2.9	3.9	2.7	4.0	2.6
40	4.5	35.0	3.0	2.6	3.6	2.8	4.2	3.2	4.5	3.2	4.7	3.3	4.9	3.2	5.0	3.0
63	7.1	35.0	4.8	4.0	5.7	4.5	6.6	5.0	7.1	5.1	7.5	5.2	7.7	5.0	7.8	4.8

CA03A095

5 Capacity tables

5 - 2 Heating Capacity Tables

5

FXKQ-MA

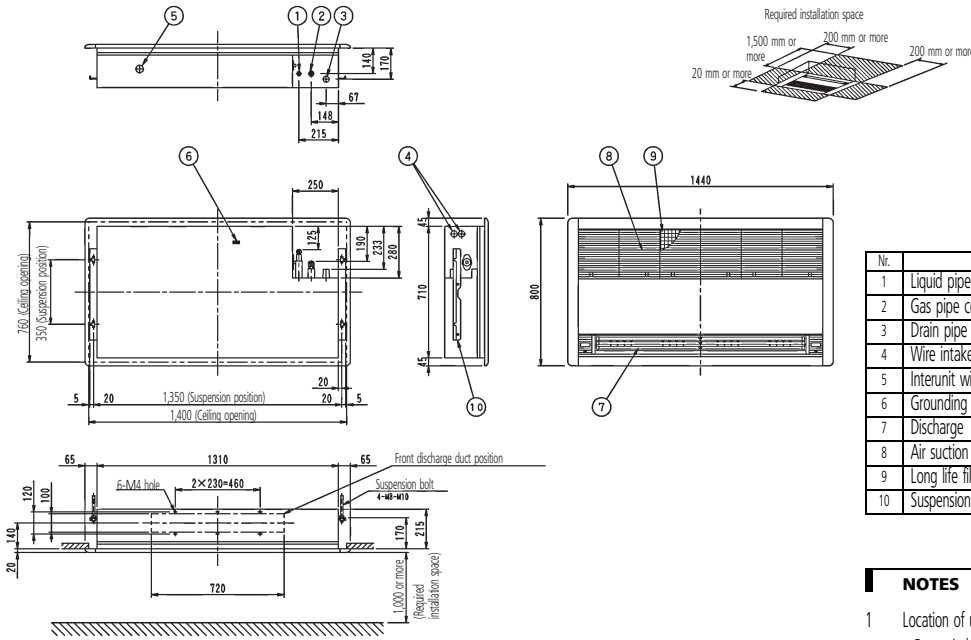
Unit size	Nominal capacity	Outdoor air temperature		Indoor air temperature °CDB					
		°CDB	°CWB	16.0	18.0	20.0	21.0	22.0	24.0
				kW	kW	kW	kW	kW	kW
25	3.2	7.0	6.0	3.4	3.4	3.2	3.1	3.0	2.8
32	4.0	7.0	6.0	4.2	4.2	4.0	3.9	3.7	3.5
40	5.0	7.0	6.0	5.2	5.2	5.0	4.8	4.7	4.4
63	8.0	7.0	6.0	8.4	8.4	8.0	7.7	7.5	7.0

CA03A095

6 Dimensional drawings

6 - 1 Dimensional Drawings

FXKQ63MA



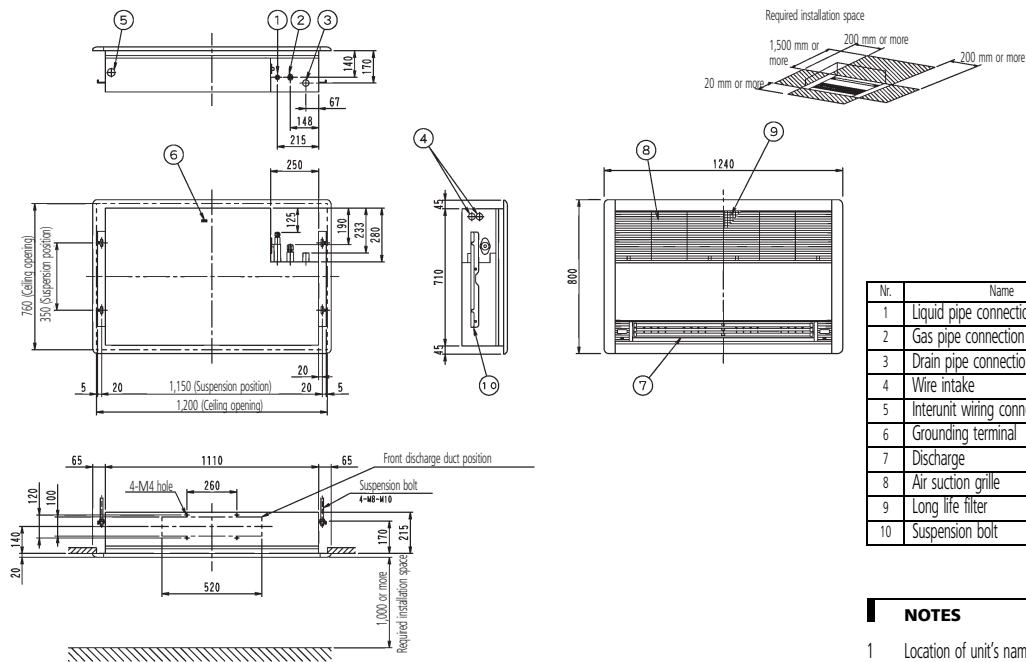
Nr.	Name	Description
1	Liquid pipe connection	ø 9.5 Flare connection
2	Gas pipe connection	ø 15.9 Flare connection
3	Drain pipe connection	VP25 (O.D. ø 32)
4	Wire intake	
5	Interunit wiring connection	
6	Grounding terminal	Inside switch box (M4)
7	Discharge	
8	Air suction grille	
9	Long life filter	
10	Suspension bolt	

NOTES

- Location of unit's name plate:
 - For main body: Bottom part of fan housing inside of air suction grille.
 - For decoration panel: Service lid face inside of air suction grille.
- When installing an optional accessory, refer to the installation drawings.

3D038841

FXKQ25,32,40MA



Nr.	Name	Description
1	Liquid pipe connection	ø 6.4 Flare connection
2	Gas pipe connection	ø 12.7 Flare connection
3	Drain pipe connection	VP25 (O.D. ø 32)
4	Wire intake	
5	Interunit wiring connection	
6	Grounding terminal	Inside switch box (M4)
7	Discharge	
8	Air suction grille	
9	Long life filter	
10	Suspension bolt	

NOTES

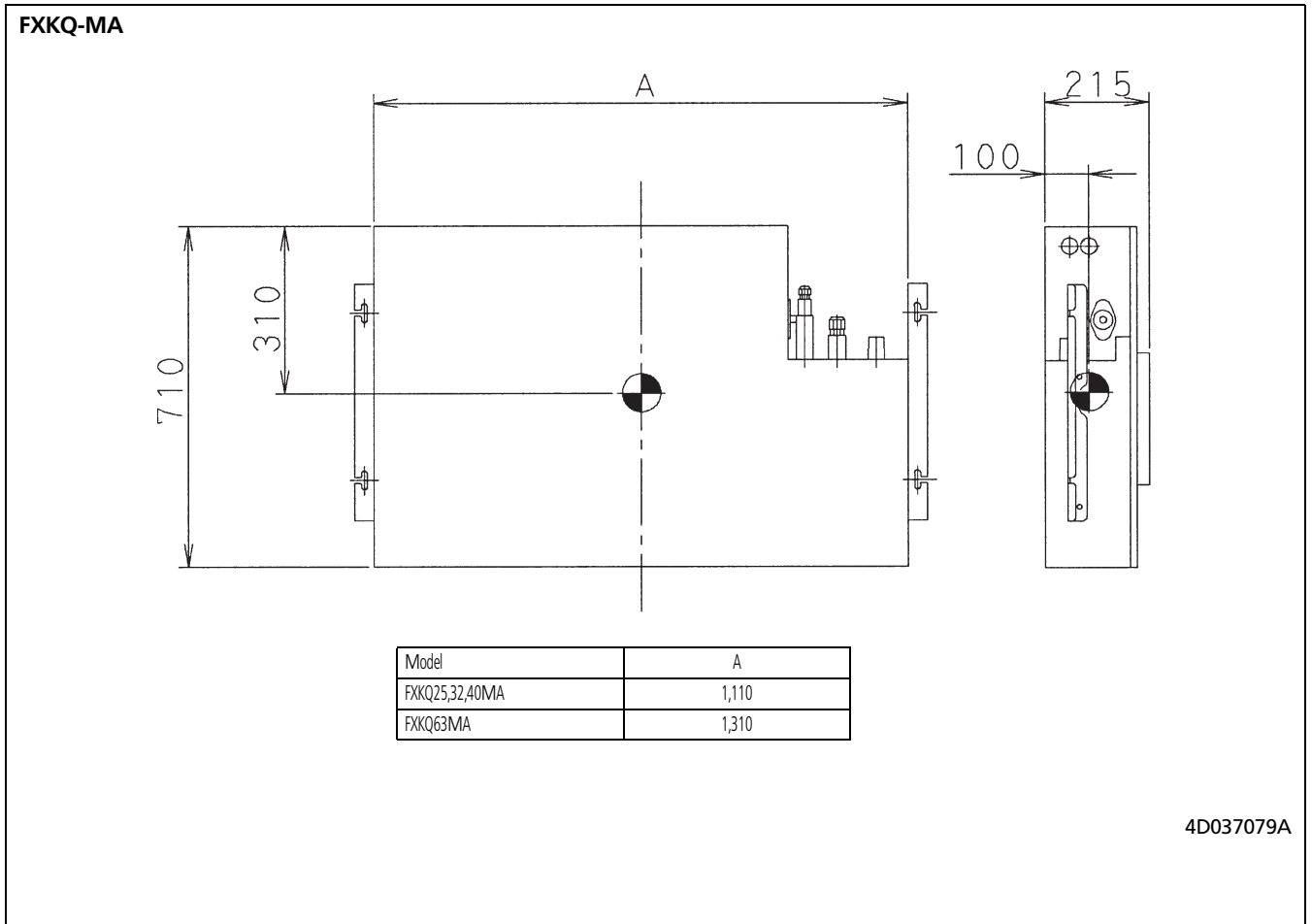
- Location of unit's name plate:
 - For main body: Bottom part of fan housing inside of air suction grille.
 - For decoration panel: Service lid face inside of air suction grille.
- When installing an optional accessory, refer to the installation drawings.

3D038840

7 Centre of gravity

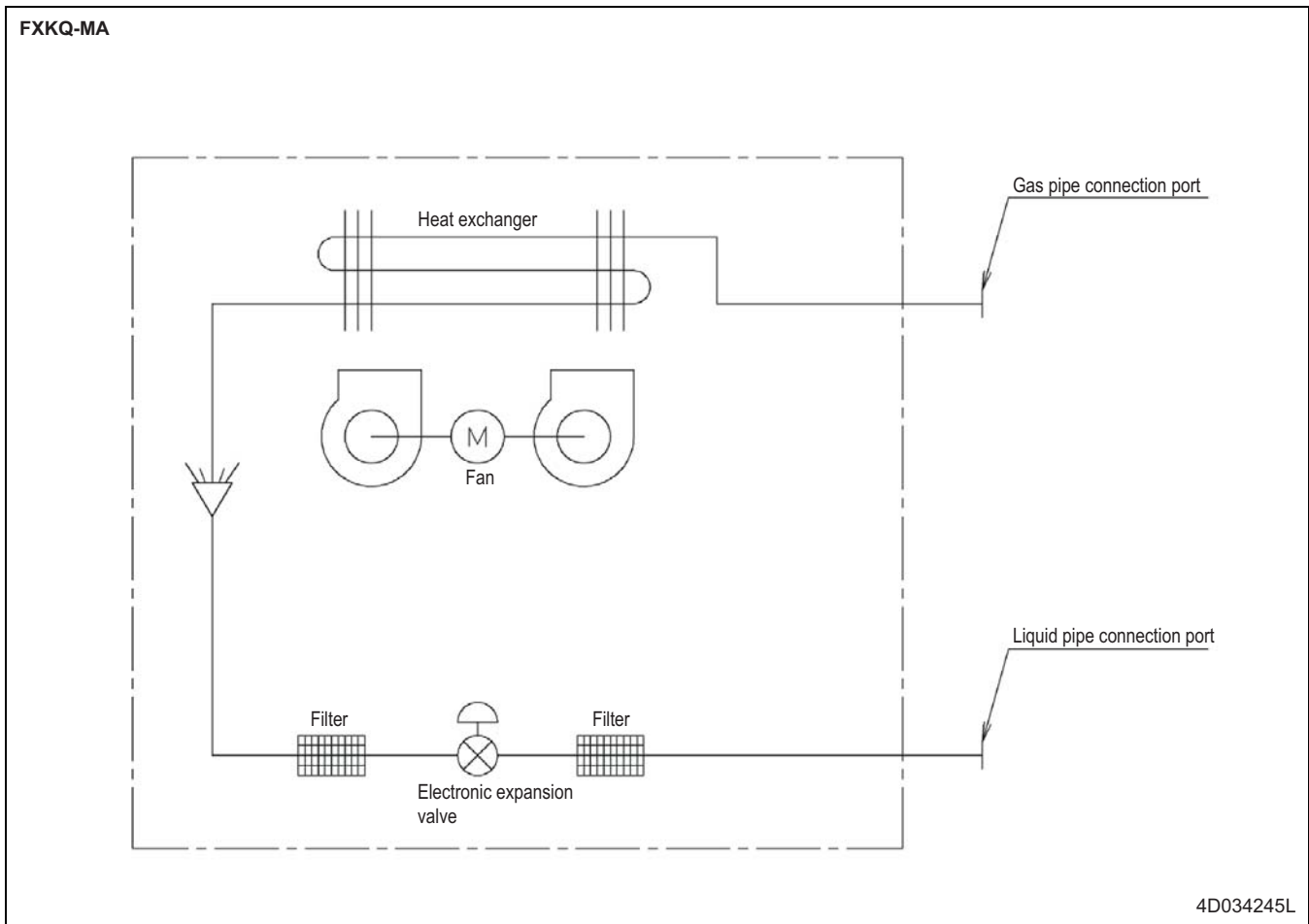
7 - 1 Centre of Gravity

7



8 Piping diagrams

8 - 1 Piping Diagrams



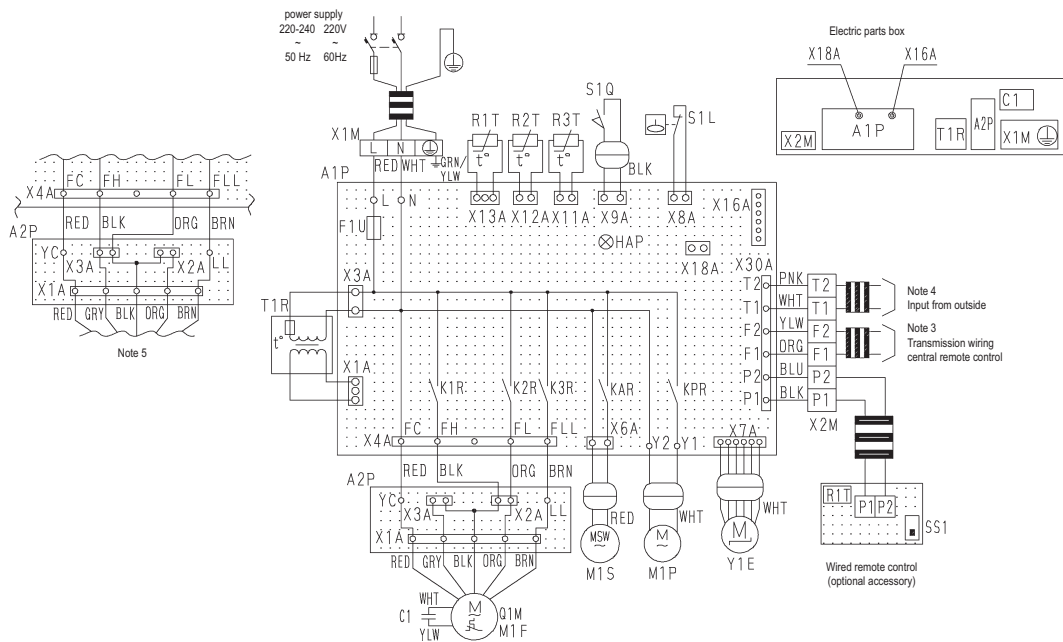
9 Wiring diagrams

9 - 1 Wiring Diagrams - Single Phase

9

FXKQ-MA

WIRING DIAGRAM



Indoor unit		R1T	Thermistor (air)	Wired remote control	
A1P	Printed circuit board	R2T • R3T	Thermistor (coil)	R1T	Thermistor (air)
A2P	Terminal board	S1L	Float switch	SS1	Selector switch (main/sub)
C1	Capacitor (M1F)	S1Q	Limit switch (swing flap)	Connector (adaptor for wiring)	
F1U	Fuse (B, 5A, 250V)	T1R	Transformer (220-240V/22V)	X16A	Connector (adapter for wiring)
HAP	Light emitting diode (service monitor green)	X1M	Terminal block (power)	X18A	Connector (wiring adapter for electrical appendices)
K1R-K3R	Magnetic relay (M1F)	X2M	Terminal block (control)		
KAR	Magnetic relay (M1S)	Y1E	Electronic expansion valve		
KPR	Magnetic relay (M1P)				
M1F	Motor (indoor fan)				
M1P	Motor (drain pump)				
M1S	Motor (swing flap)				
Q1M	Thermo switch (M1F embedded)				

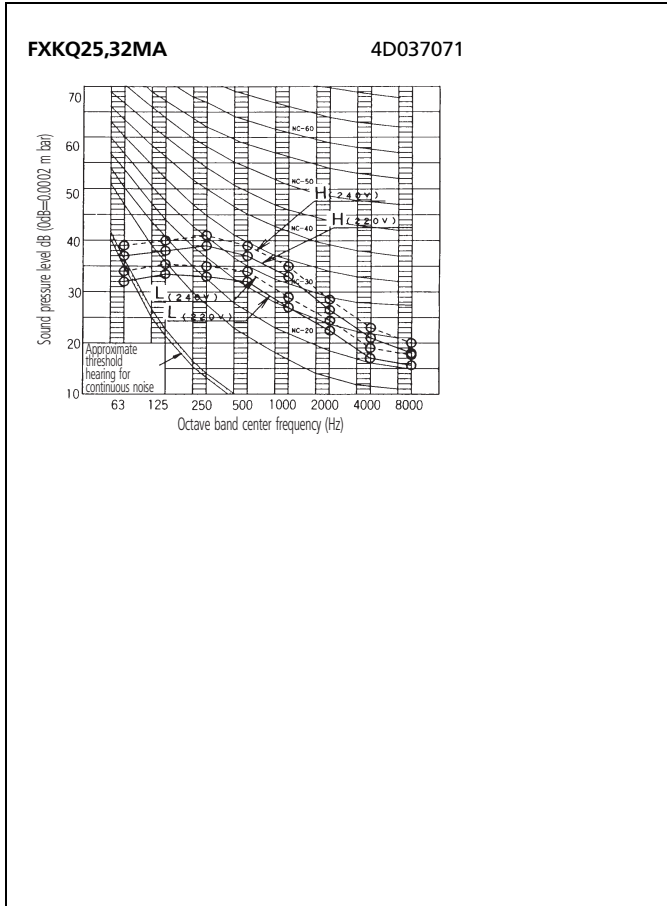
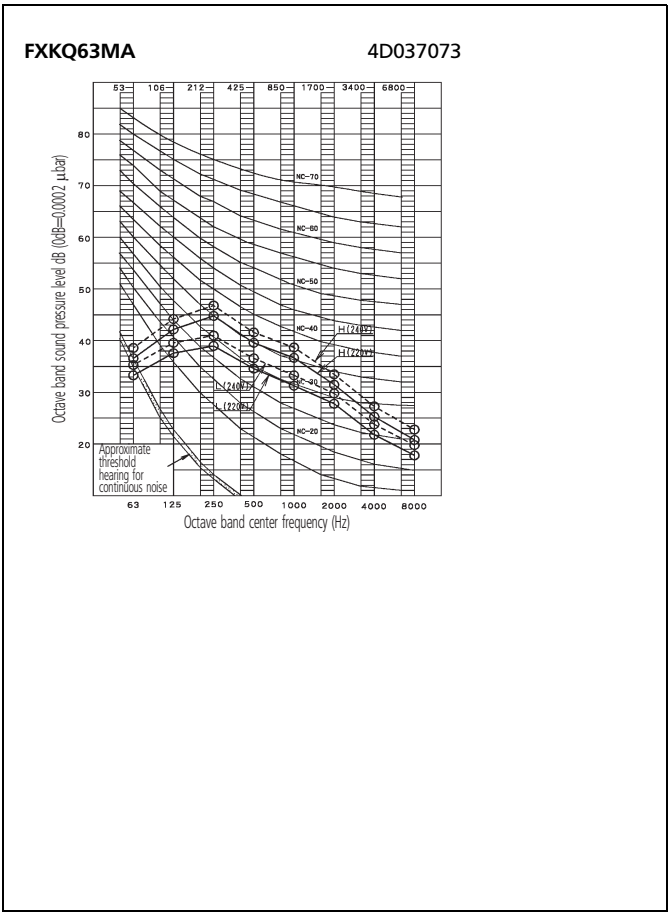
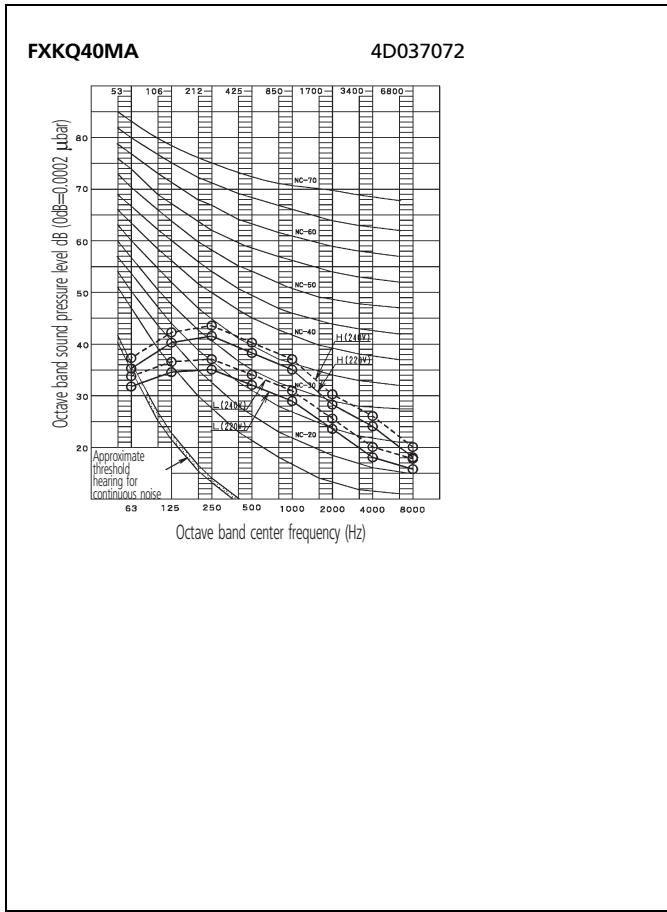
3D039564C

NOTES

- Terminal strip □□□□ : connector ⊙ : terminal ⊕ : protective earth (screw)
- Field wiring
- In case using central remote control, connect to the unit in accordance with the attached instruction manual.
- When connecting the input wires from outside, forced OFF or ON/OFF control operation can be selected by remote control. In details, refer to the installation manual attached the unit.
- In case high E.S.P. operation, change over the wiring connecting from X2A to X3A.
- Symbols show as follows. (PNK: pink, WHT: white, YLW: yellow, ORG: Orange, BLU: blue, BLK: black, RED: red, BRN: brown, GRY: gray)
- Use copper conductors only.

10 Sound data

10 - 1 Sound Pressure Spectrum



11 Air flow patterns

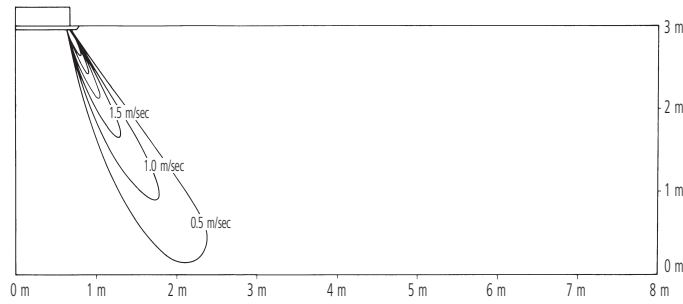
11 - 1 Air Flow Pattern - Heating

11

FXKQ63MA

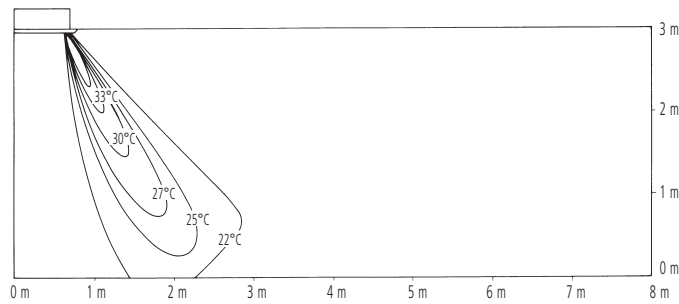
Heating air velocity distribution

Lower air blow



Heating temperature distribution

Lower air blow



NOTES

- 1 The corner type is applicable on a high ceiling. The standard set-up height is 3 m. Shown here is the measurement distribution at the ceiling height of 3 m.



These products are not within the scope of the Eurovent certification program

The present leaflet is drawn up by way of information only and does not constitute an offer binding upon Daikin Europe N.V.. Daikin Europe N.V. has compiled the content of this leaflet to the best of its knowledge. No express or implied warranty is given for the completeness, accuracy, reliability or fitness for particular purpose of its content and the products and services presented therein. Specifications are subject to change without prior notice. Daikin Europe N.V. explicitly rejects any liability for any direct or indirect damage, in the broadest sense, arising from or related to the use and/or interpretation of this leaflet. All content is copyrighted by Daikin Europe N.V.

BARCODE

Daikin products are distributed by: