



FTXS20/25K



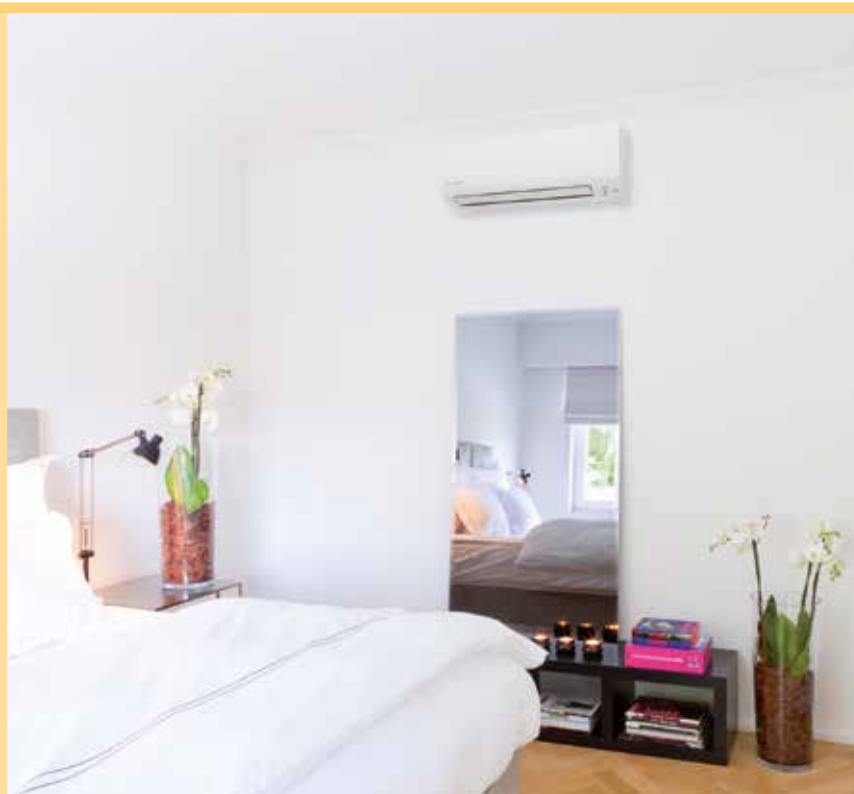
FTXS35/42/50K



ARC466A1



FTXS60/71G



FTXS / RXS-L(G)

Wall Mounted Unit



RXS35L

Outdoor Unit

RXS20/25/35/42L	H x W x D	550 x 765 x 285mm
RXS50/60L	H x W x D	735 x 825 x 300mm
RXS71F8	H x W x D	770 x 900 x 320mm

Accessories

Wired remote controller (BRC944)

The FTXS series wall mounted unit delivers top performance with Seasonal Energy Efficiency ratings up to A++.

Suitable for bedrooms, living rooms or small offices, the FTXS range are all equipped with an infra-red remote control with a 7 day timer. The time allows you to programme a 7 day schedule with 4 different actions per day.

All units are fitted with 1-area Intelligent Eye sensors. If the sensor detects the room is empty, it will switch to economy mode to save energy then restart when someone re-enters.

The FTXS35, 42 and 50K are fitted with 2-area Intelligent Eye sensors. As well as the functionality of the 1-area Intelligent Eye, when people are detected in the room the sensor will direct air-flow away from them.

All units in the FTXS range are fitted with a photocatalytic air purifying filter and are extremely quiet when operating, ensuring perfect comfort.

FTXS-K / RXS-K pairs are listed on the Energy Technology List (ETL) – the definitive list of products that qualify for Enhanced Capital Allowance (ECA).

Connectable to mini-VRV and VRV IV heat pump using a BPMK box.



Authorised User No. 00051



FEATURES

BENEFITS

Intelligent Eye Sensor	Reduced running cost by switching to economy mode when the room is empty
7 day timer	Set a full week of on and off-timings, allowing differences in schedule for week and weekends
Very low noise level	Quiet operation means the FTXS series are unobtrusive when operating
Automatic air-flow adjustment	Can improve comfort levels as the unit will automatically match fan-speed according to room temperature

Indoor Units			FTXS20K	FTXS25K	FTXS35K	FTXS42K	FTXS50K	FTXS60G	FTXS71G
Capacity	UK Total Cooling	kW	1.95	2.44	3.42	4.11	4.56	5.86	6.94
	UK Sensible Cooling	kW	1.65	1.82	2.56	2.85	3.14	3.87	4.65
	Nominal Cooling	kW	2.00	2.50	3.50	4.20	5.00	6.00	7.10
	Nominal Heating	kW	2.50	3.40	4.00	5.40	5.80	7.00	8.20
Seasonal Efficiency (EN14825) COOLING	Energy Label		A++	A++	A++	A++	A++	A	A
	Pdesign	kW	2.00	2.50	3.50	4.20	5.00	6.00	7.10
	SEER		7.40	7.90	7.47	6.80	6.80	5.58	5.23
	Annual Energy Consumption	kWh	95	111	164	216	257	376	475
Seasonal Efficiency (EN14825) HEATING	Energy Label		A++	A++	A++	A+	A+	A	A
	Pdesign	kW	2.30	2.50	3.60	4.00	4.60	4.80	6.50
	SCOP		4.77	4.78	4.85	4.20	4.20	3.89	3.50
	Annual Energy Consumption	kWh	675	732	1039	1334	1535	1728	2593
Nominal Efficiency	EER / COP		4.65 / 4.72	4.39 / 4.67	4.07 / 4.76	3.56 / 4.12	3.55 / 4	3.02 / 3.43	3.02 / 3.22
	Energy Label		A / A	A / A	A / A	A / A	A / A	B / B	B / C
	Annual Energy Consumption	kWh	215	285	430	590	705	995	1175
Air Flow Rate	High / Low	m ³ /min	8.8 / 4.7	9.1 / 5	11.2 / 5.8	11.2 / 7	11.9 / 7.4	16 / 11.3	17.2 / 11.5
Dimensions	Height	mm	289	289	298	298	298	290	290
	Width	mm	780	780	900	900	900	1050	1050
	Depth	mm	215	215	215	215	215	250	250
Weight		kg	8	8	11	11	11	12	12
Sound Pressure	High / Low	dBA	40 / 24	41 / 25	45 / 29	45 / 33	46 / 34	45 / 36	46 / 37
Sound Power		dBA	58	58	59	59	60	61	62

Outdoor Units			RXS20L	RXS25L	RXS35L	RXS42L	RXS50L	RXS60L	RXS71F8
Dimensions	Height x Width x Depth	mm	550 x 765 x 285			550 x 765 x 285		735 x 825 x 300	
Weight		kg	34	34	34	39	47	48	71
Electrical Details	Power Supply		1ph			1ph			
	Running Current	A	2.30	3.10	4.10	5.70	6.30	8.80	10.49
	Starting Current	A	2.8	3.3	4.3	6.6	6.8	9.4	11.7
	Max Fuse Size	A	10	10	10	20	20	20	20
Interconnection Wiring	Core / Cable size		3+E / 1.5			3+E / 2.5			
Piping Connections	Liquid / Gas	inches	1/4 / 3/8	1/4 / 3/8	1/4 / 3/8	1/4 / 3/8	1/4 / 1/2	1/4 / 1/2	1/4 / 5/8
Pipework	Maximum Length	m	20	20	20	20	30	30	30
	Maximum Vertical Rise	m	15	15	15	15	20	20	20
	Precharged to	m	10	10	10	10	10	10	10
	Additional Charge	g/m	20			20			
	Holding Charge	kg	1.0	1.0	1.2	1.3	1.7	1.5	2.3
Sound Pressure	High	dBA	46	46	48	48	48	49	52
Sound Power		dBA	59	59	61	61	62	62	65



Daikin's unique position as a manufacturer of air conditioning equipment, compressors and refrigerants has led to its close involvement in environmental issues. For several years Daikin has had the intention to become a leader in the provision of products that have limited impact on the environment. This challenge demands the eco design and development of a wide range of products and an energy management system, resulting in energy conservation and a reduction of waste.



Daikin Europe N.V. participates in the Eurovent Certification programme for Air conditioners (AC), Liquid Chilling Packages (LCP), Air handling units (AHU) and Fan coil units (FCU). Check ongoing validity of certificate online: www.eurovent-certification.com or using: www.certiflash.com

The present leaflet is drawn up by way of information only and does not constitute an offer binding upon Daikin UK. Daikin UK has compiled the content of this leaflet to the best of its knowledge. No express or implied warranty is given for the completeness, accuracy, reliability or fitness for particular purpose of its content and the products and services presented therein. Specifications are subject to change without prior notice. Daikin UK explicitly rejects any liability for any direct or indirect damage, in the broadest sense, arising from or related to the use and/or interpretation of this leaflet. All content is copyrighted by Daikin UK.

