



Air Conditioning Technical Data

Concealed ceiling unit



EEDEN15-100

FDXS-F, FDXS-F9

TABLE OF CONTENTS

FDXS-F, FDXS-F9

1	Features	2
	FDXS-F	2
	FDXS-F9	3
2	Specifications	4
	Technical Specifications	4
	Electrical Specifications	5
3	Options	6
4	Dimensional drawings	7
5	Centre of gravity	9
6	Piping diagrams	11
7	Wiring diagrams	12
	Wiring Diagrams - Single Phase	12
8	Sound data	13
	Sound Pressure Spectrum - Cooling	13
	Sound Pressure Spectrum - Heating	14
9	Fan characteristics	15

1 Features

1 - 1 FDXS-F

- Compact dimensions, can easily be mounted in a ceiling void of only 240mm
- Discretely concealed in the ceiling: only the suction and discharge grilles are visible
- Low energy consumption thanks to DC fan motor
- Medium external static pressure up to 40Pa facilitates unit use with flexible ducts of varying lengths
- Optimised heating solution for your home
- Energy saving during standby mode: reduces current consumption by about 80% when operating In standby

1



Energy saving during standby mode



Fan only



Fan speed steps



Dry programme



Air filter



Weekly timer



24 hour timer



Infrared remote control



Wired remote control



Centralised control



Auto-restart



Self diagnosis



Multi model application



VRV for residential application

1 Features

1 - 2 FDXS-F9

- Compact dimensions, can easily be mounted in a ceiling void of only 240mm
- Medium external static pressure up to 40Pa facilitates unit use with flexible ducts of varying lengths
- Discreetly concealed in the ceiling: only the suction and discharge grilles are visible
- Low energy consumption thanks to DC fan motor
- Optimised heating solution for your home
- Energy saving during standby mode: reduces current consumption by about 80% when operating In standby



Fan only



Fan speed steps



Dry programme



Air filter



Weekly timer



24 hour timer



Infrared remote control



Wired remote control



Centralised control



Auto-restart



Self diagnosis



Multi model application



VRV for residential application

2 Specifications

2

2-1 Technical Specifications				FDXS25F	FDXS35F	FDXS60F	FDXS50F9	
Power input	Cooling	Nom.	kW	0.036		0.060		
	Heating	Nom.	kW	0.036		0.060		
Dimensions	Unit	Height/Width/Depth	mm	200/750/620		200/1,150/620		
	Packed unit	Height/Width/Depth	mm	274/906/751		266/1,306/751		
Weight	Unit		kg	21		30		
	Packed unit		kg	29		37		
Packing	Weight		kg	-		7		
Heat exchanger	Length		mm	500		900		
	Rows	Quantity		3		2		
	Fin pitch		mm	1.5				
	Stages	Quantity		12				
	Tube type			ø7 Hi-XD				
	Fin	Type		Multi slit fin				
Air filter	Type			Removable / washable / mildew proof				
Fan	Type			Sirocco fan				
	Air flow rate	Cooling	High	m ³ /min	8.7	16.0	12.0	
				cfm	307	565	424	
			Nom.	m ³ /min	8.7	16.0	11.0	
				cfm	307	565	338	
		Heating	High	m ³ /min	8.7	16.0	12.0	
				cfm	307	565	424	
			Nom.	m ³ /min	8.0	14.8	11.0	
				cfm	282	523	338	
	Low	m ³ /min	7.3	13.5	10.0			
		cfm	258	477	353			
	External static pressure	Nom.	Pa	30	40	40		
	Fan motor	Model			KFD-280-44-8A		KFD-280-65-8A	
		Speed	Steps		3			
Cooling			High/ Medium/Low	rpm	1,270/1,180/1,090		1,280/1,160/1,040	
			Heating	High/ Medium/Low	rpm	1,270/1,180/1,090		1,280/1,160/1,040
Sound power level	Cooling		dBA	53	56	55		
	Heating		dBA	53	56	55		
Sound pressure level	Cooling	High/Nom./Low	dBA	35/33/27		38/36/30		
	Heating	High/Nom./Low	dBA	35/33/27		38/36/30		
Control systems	Wired remote control			BRC1E52A/B				
Refrigerant	Type			R-410A				
Piping connections	Liquid	OD		6.35				
	Gas	OD		9.5		12.7		
	Drain			VP20 (I.D. 20/O.D. 26)				
	Heat insulation			Both liquid and gas pipes				
Temperature control				Microcomputer control				

Standard Accessories : Sealing material; Quantity : 2;

Standard Accessories : Washer for hanger bracket; Quantity : 8;

Standard Accessories : Clamp metal; Quantity : 1;

Standard Accessories : Washer fixing plate; Quantity : 4;

Standard Accessories : Sealing pad; Quantity : 1;

Standard Accessories : Screws for duct flanges; Quantity : 1;

Standard Accessories : Drain hose; Quantity : 1;

Standard Accessories : Clamps; Quantity : 6;

Standard Accessories : Operation manual; Quantity : 1;

2 Specifications

Standard Accessories : Insulation for fitting; Quantity : 1;

Standard Accessories : Air filter; Quantity : 1;

Standard Accessories : Installation manual; Quantity : 1;

2-2 Electrical Specifications				FDXS25F	FDXS35F	FDXS60F	FDXS50F9
Power supply	Name			VE			
	Phase			1~			
	Frequency		Hz	50			
	Voltage		V	230		220-240	
Current	Nominal running current (RLA) - 50Hz	Cooling	A	0.3		0.5	
		Heating	A	0.3		0.5	

Notes

Operating sound is based on the rear side suction inlet and ESP 40Pa. Operating sound for under side suction inlet: (operation sound for rear side suction inlet) +5dB. However, when installation to which the ESP becomes low is carried out, 5dB or more may go up

When connected with multi-system outdoor unit, refer to the specifications of the multi outdoor unit to be connected.

3 Options

3 - 1 Options

3

FDXS-F(9)

	Option name	FDXS2SF	FDXS3SF	FDXS50F9	FDXS60F
Individual control systems	Wired remote control		BRC1D52/BRC1D61 (1)/BRC1E51A		
	Simplified remote controller		BRC2E52C (3)		
	Stylish remote controller		BRC3E52C (3)		
	Remote control for hotel use		BRC4C65		
	Infrared remote control (HPF)		DCS302CA51/DCS302CA61 (1)		
Centralised control systems	Central remote control		DCS301BA51/DCS301BA61(A)		
	Unified ON/OFF control		DST301BA51/DST301BA61 (1)		
	Schedule timer		DCS303A51 (1) (2)		
	Residential central remote control		KRP1B56		
	Adapter for wiring		KRP2A53		
Other options	Wiring adapter for electrical appendices 1		KRP4A54		
	Wiring adapter for electrical appendices 2		KRC501-4B		
	Remote sensor		KRP1BA101		
	Installation box for adapter PCB		KIB212AA		
	Electric box with earth terminal - 2 blocks		KIB311AA		
	Electric box with earth terminal - 3 blocks		KEK26-1A		
	Noise filter (for electromagnetic interference use only)		KDT25A92/KDT25N50/KDT25N63		
	Insulation kit for high humidity		BRP7A54		
	Digital input adaptor				

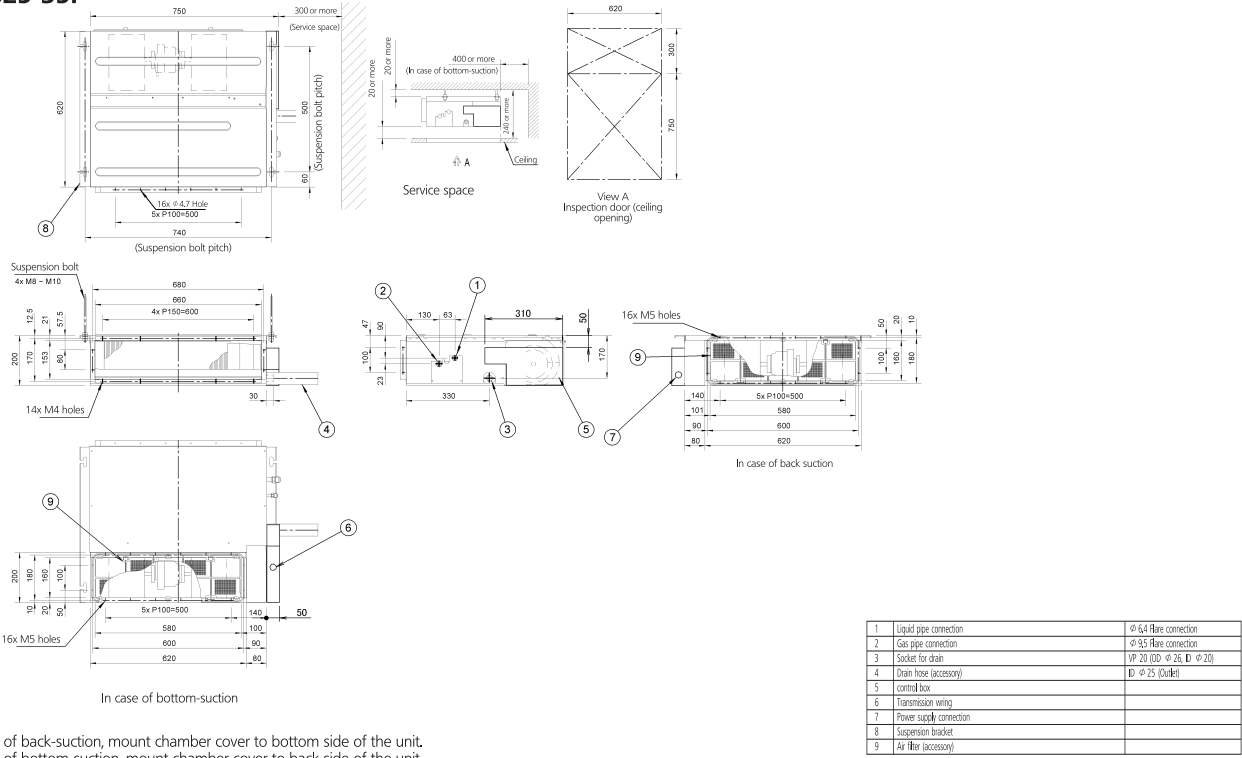
- (1) For DAME only
- (2) For residential use only. Cannot be used together with other centralised control equipment.
- (3) Included languages are:
 Language pack 1: English, German, French, Dutch, Spanish, Italian and Portuguese.
 With PC cable - EKPCAB3 - in combination with the Updater PC software, you can additionally change the language to:
 Language pack 2: English, Bulgarian, Croatian, Czech, Hungarian, Romanian and Slovenian.
 Language pack 3: English, Greek, Polish, Russian, Serbian, Slovakian and Turkish.
- (4) Only possible in combination with simplified remote control BRC2/3E52C.
- (5) Requires installation box for adaptor PCB.

3D086534B

4 Dimensional drawings

4 - 1 Dimensional Drawings

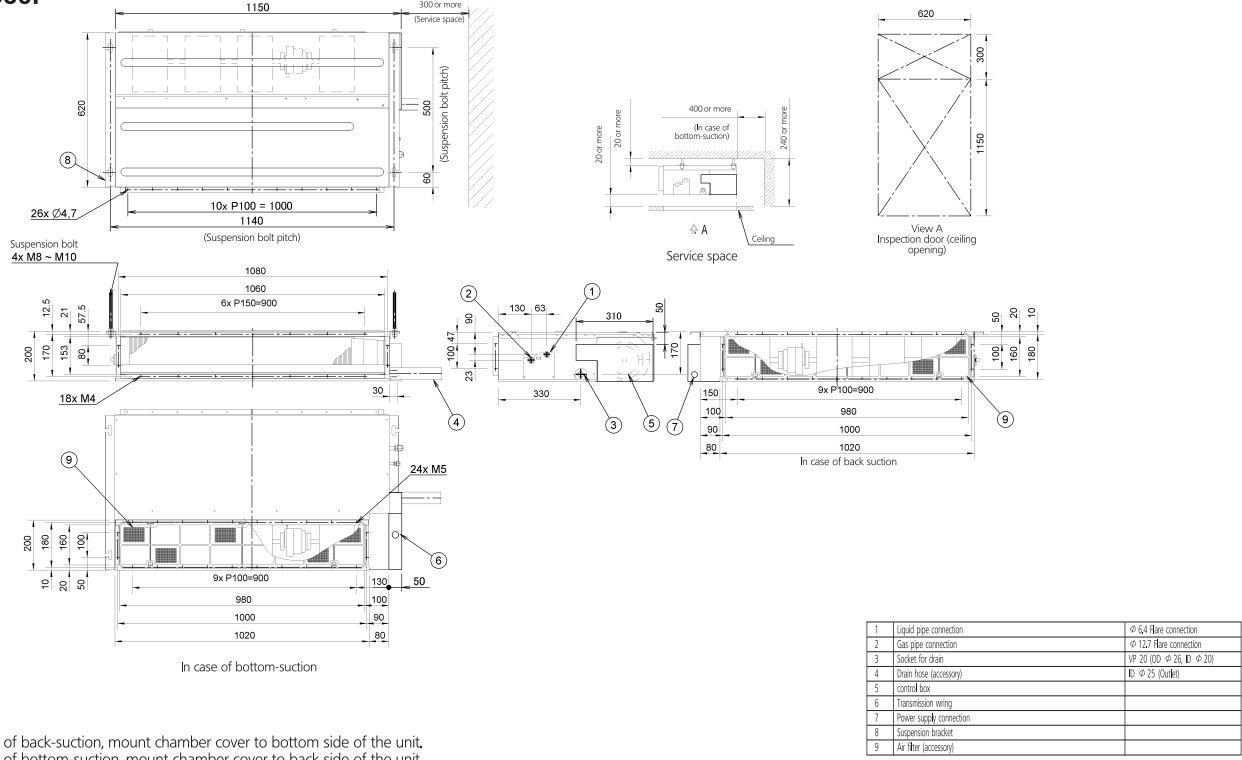
FDXS25-35F



Note:
 1. In case of back-suction, mount chamber cover to bottom side of the unit.
 In case of bottom-suction, mount chamber cover to back side of the unit.
 2. Location of unit's name plate: control box cover.
 3. Mount the air filter at the suction side. (Use an air filter whose dust collecting efficiency is at least 50% in a gravimetric technique.) It can not be equipped with air filter (accessory) when connecting duct to suction side.

3D081343

FDXS60F



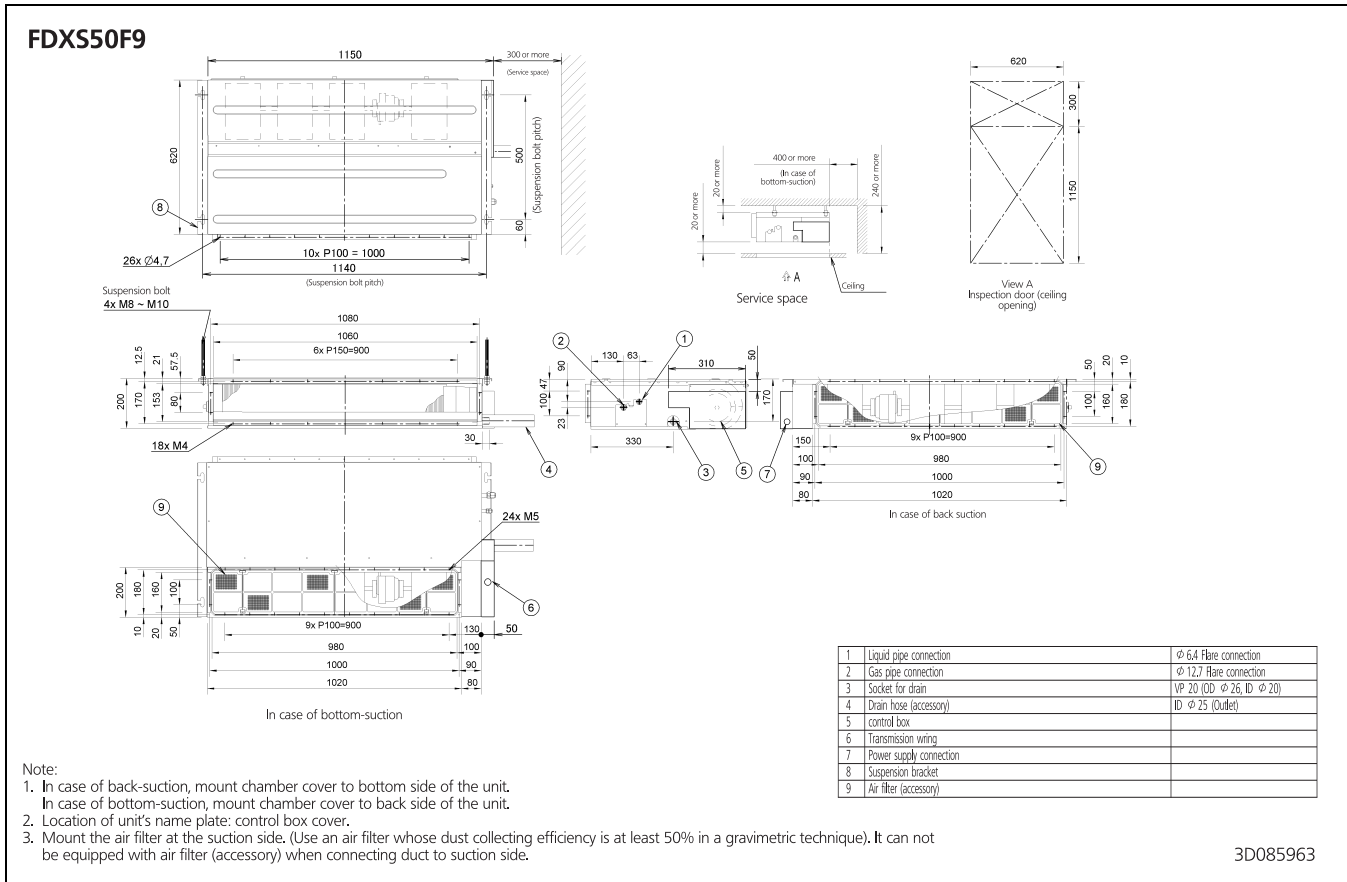
Note:
 1. In case of back-suction, mount chamber cover to bottom side of the unit.
 In case of bottom-suction, mount chamber cover to back side of the unit.
 2. Location of unit's name plate: control box cover.
 3. Mount the air filter at the suction side. (Use an air filter whose dust collecting efficiency is at least 50% in a gravimetric technique.) It can not be equipped with air filter (accessory) when connecting duct to suction side.

3D081360

4 Dimensional drawings

4 - 1 Dimensional Drawings

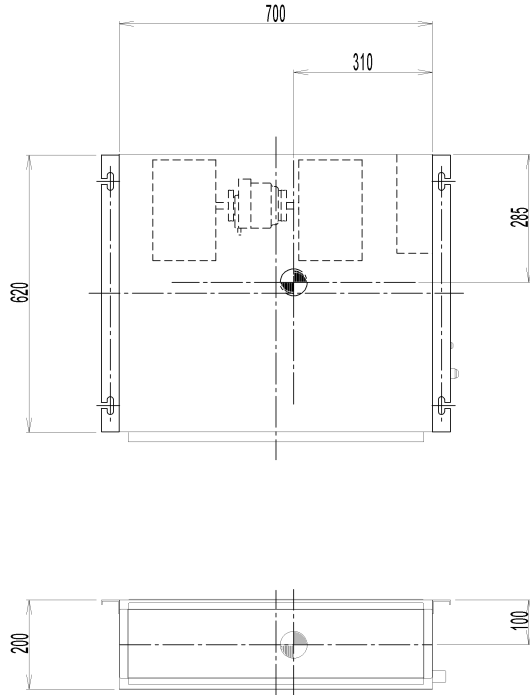
4



5 Centre of gravity

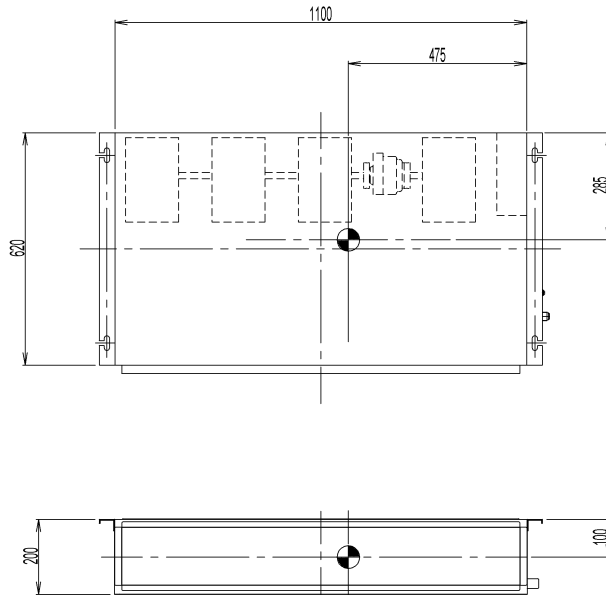
5 - 1 Centre of Gravity

FDXS25-35F



4D081337

FDXS60F

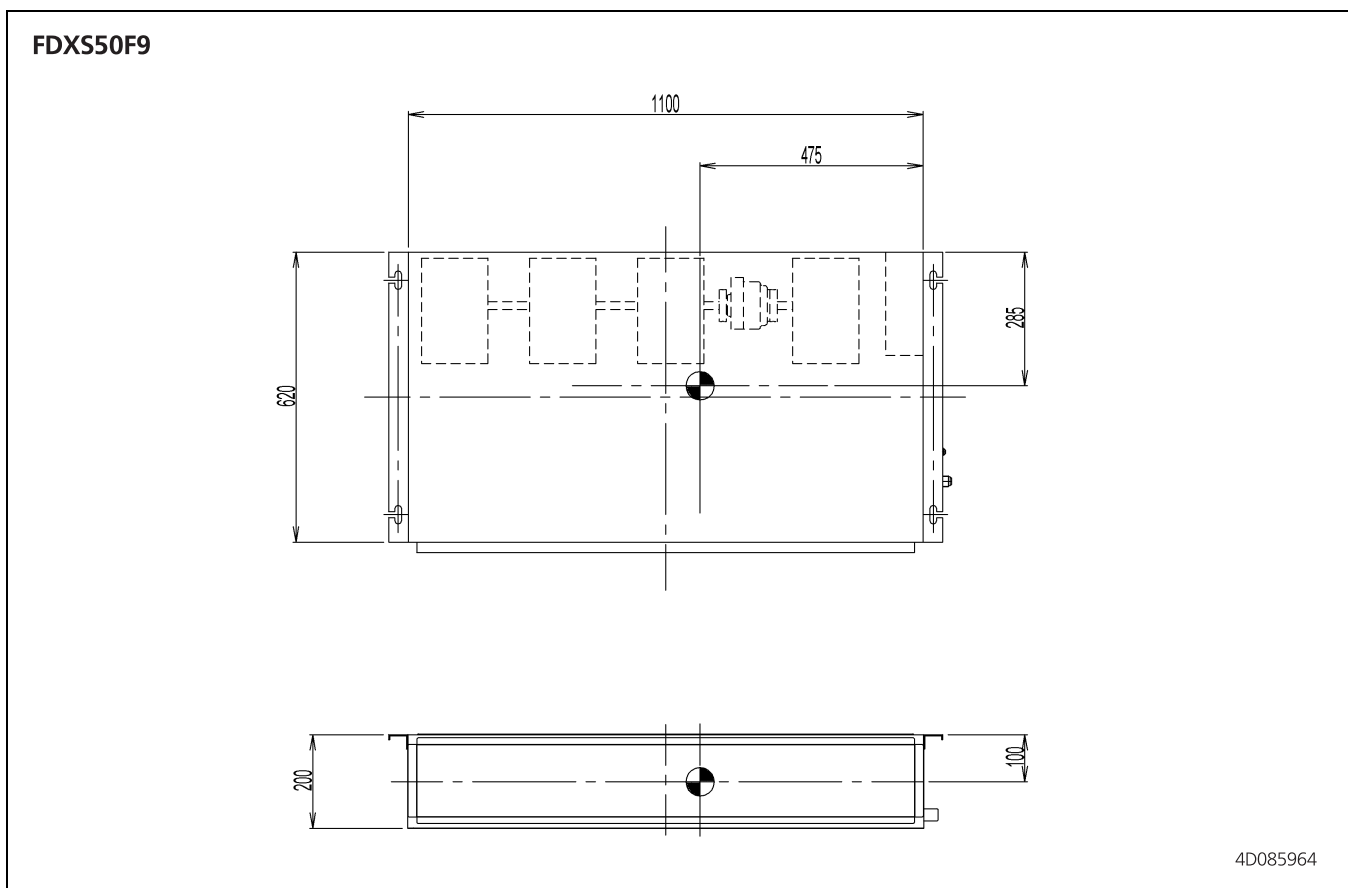


4D081339

5 Centre of gravity

5 - 1 Centre of Gravity

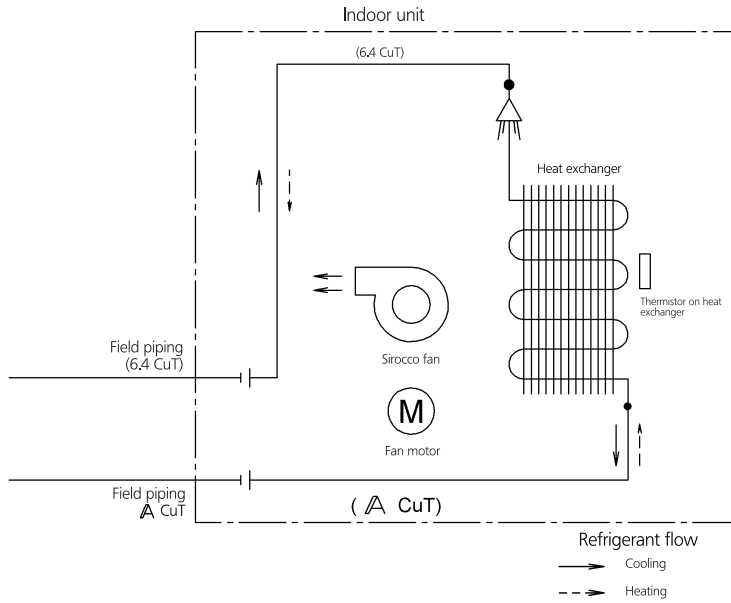
5



6 Piping diagrams

6 - 1 Piping Diagrams

FDXS-F(9)



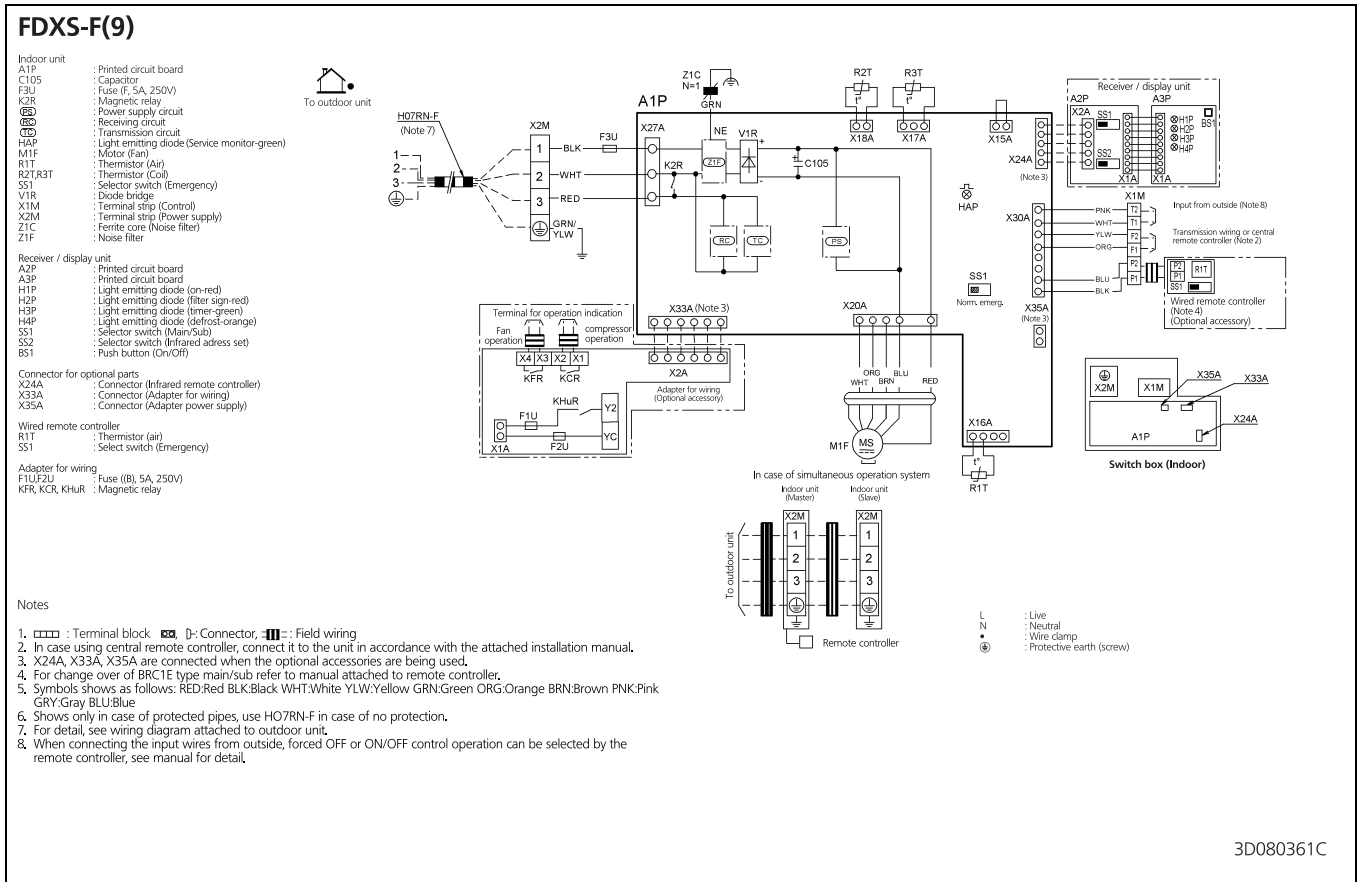
Model	A
FDXS25F FDXS35F	9.5
FDXS50F9 FDXS60F	12.7

4D081335B

7 Wiring diagrams

7 - 1 Wiring Diagrams - Single Phase

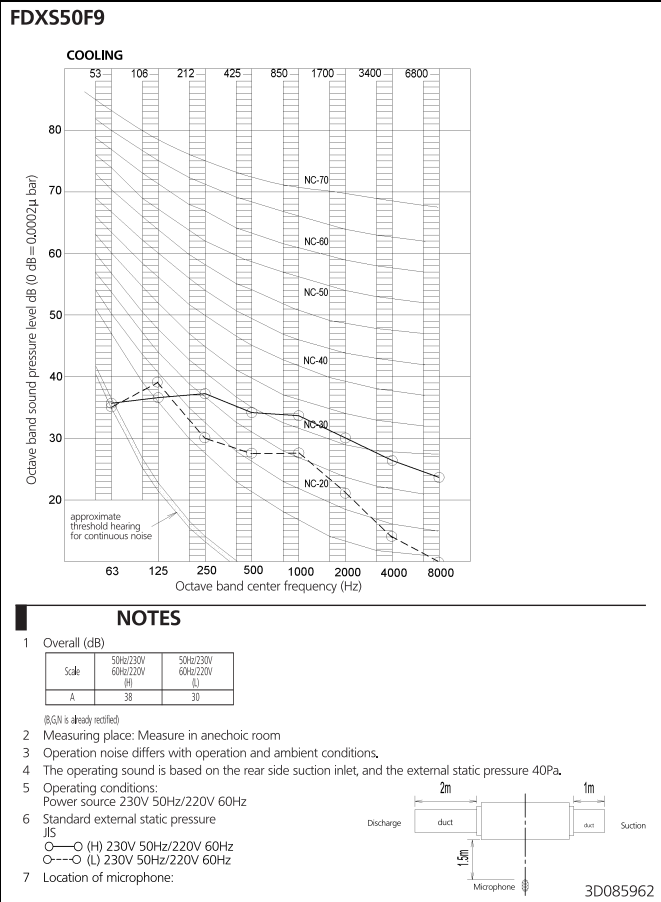
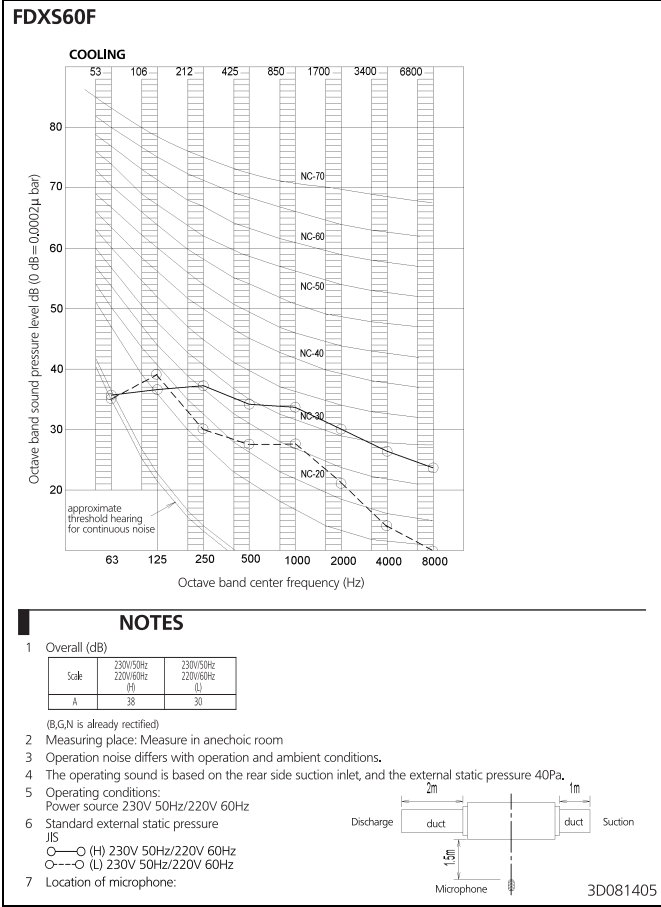
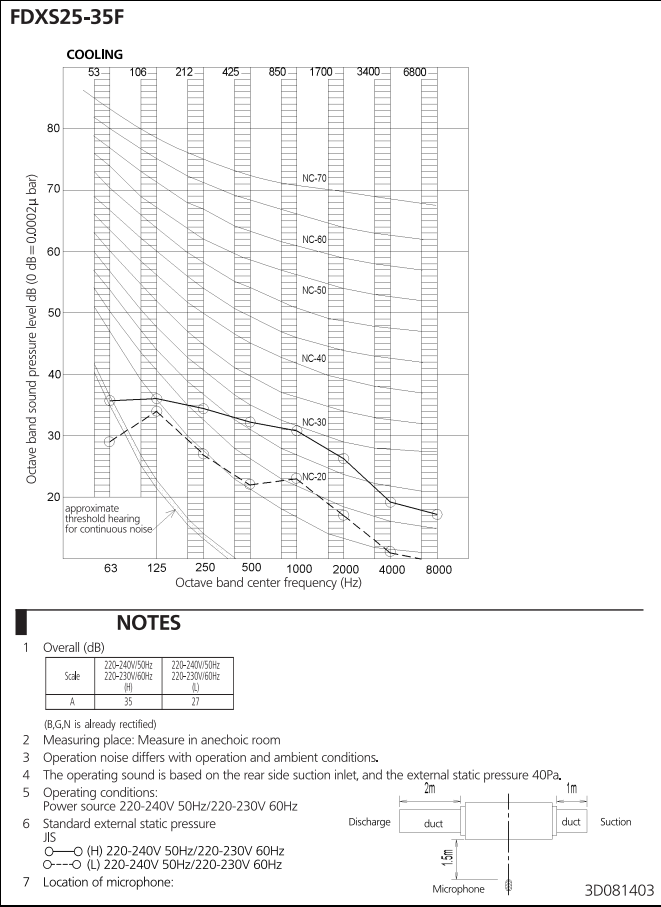
7



3D080361C

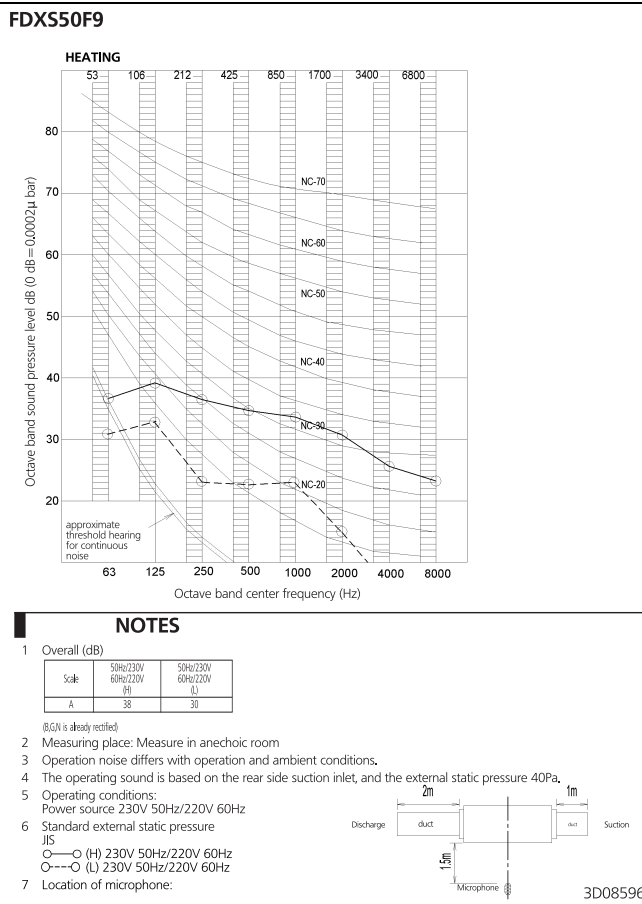
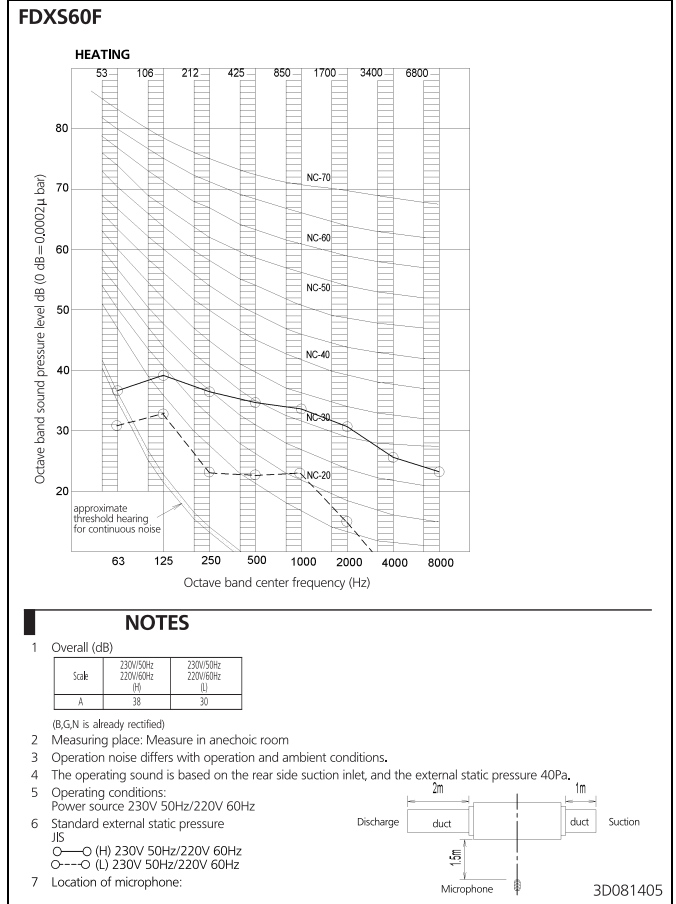
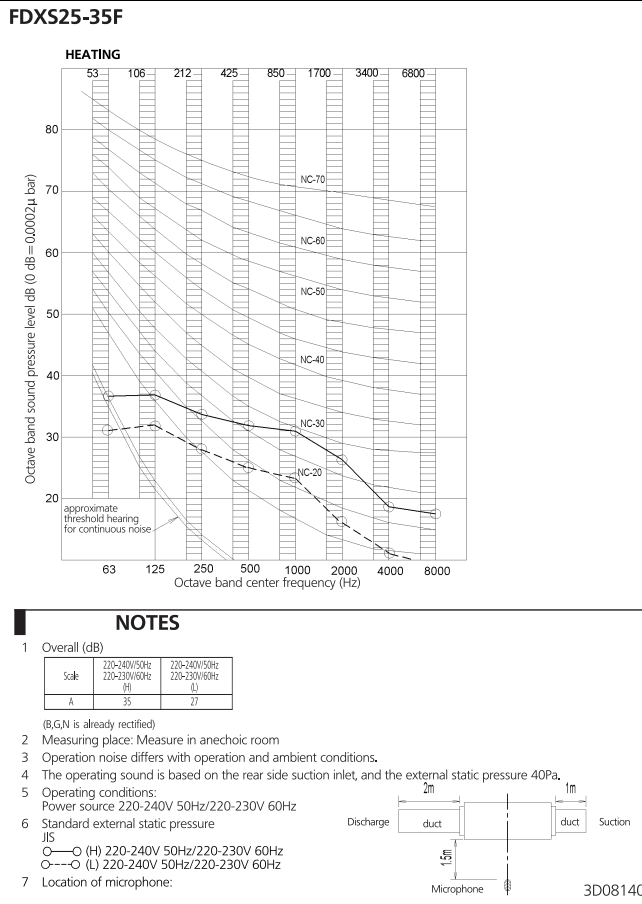
8 Sound data

8 - 1 Sound Pressure Spectrum - Cooling



8 Sound data

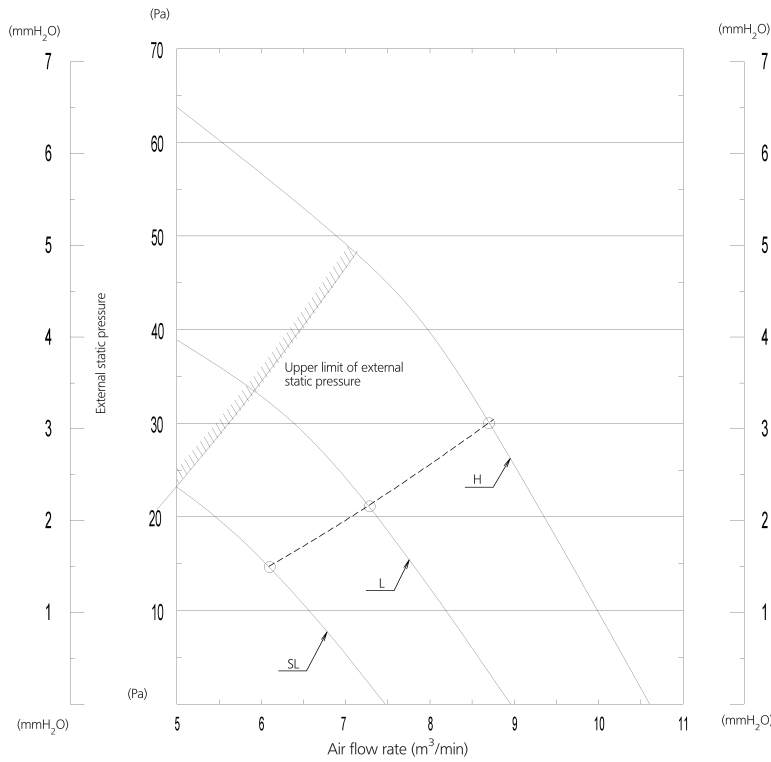
8 - 2 Sound Pressure Spectrum - Heating



9 Fan characteristics

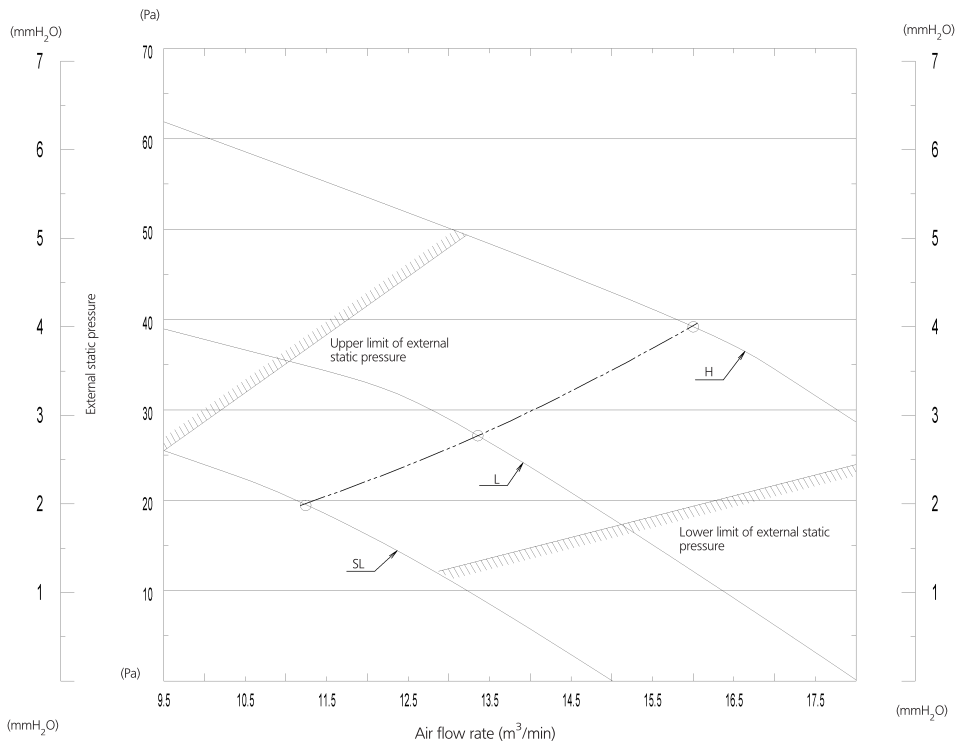
9 - 1 Fan Characteristics

FDXS25-35F



3D081327

FDXS60F

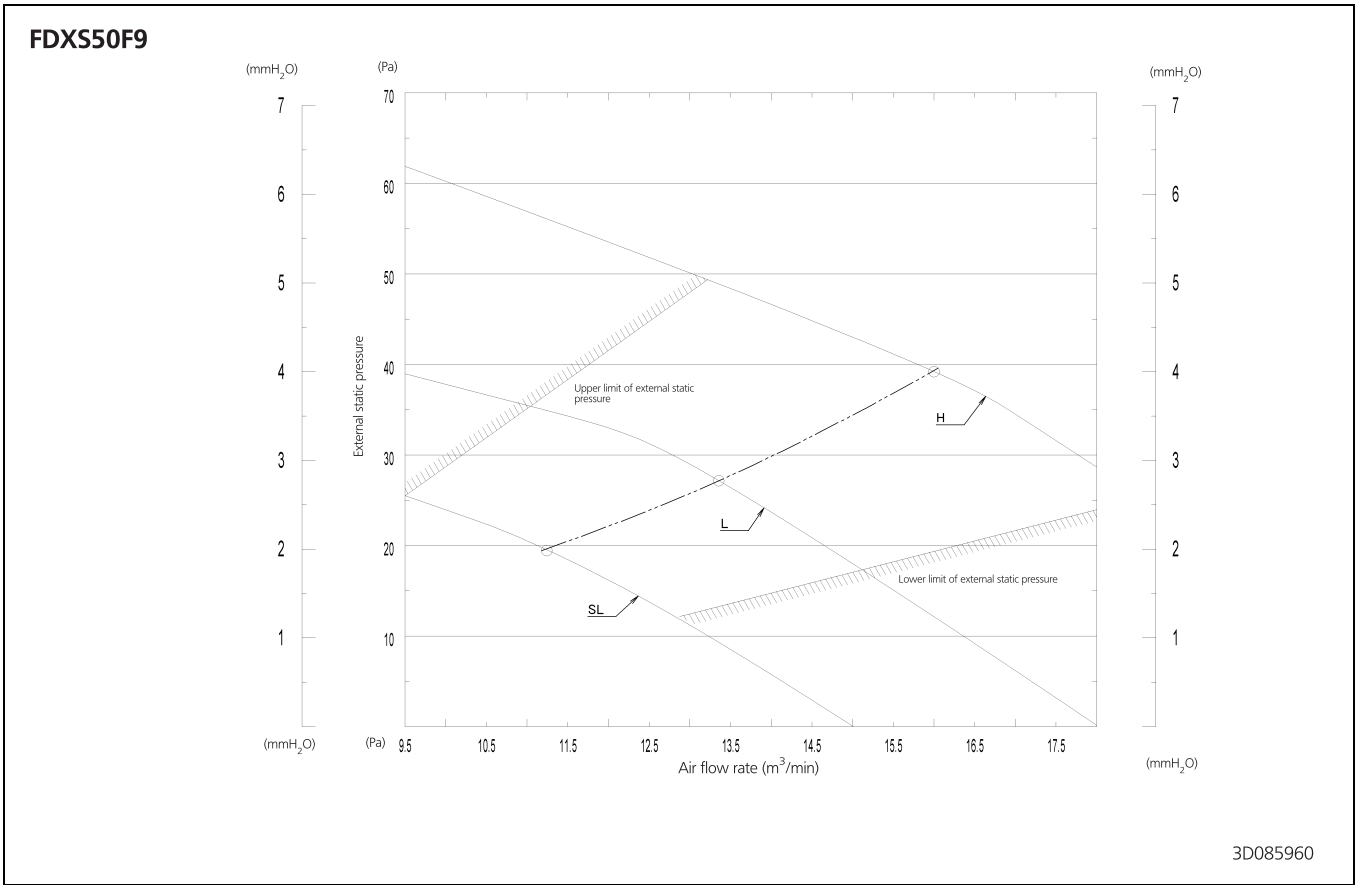


3D081329

9 Fan characteristics

9 - 1 Fan Characteristics

9





Daikin Europe N.V. participates in the Eurovent Certification programme for Liquid Chilling Packages (LCP), Air handling units (AHU), Fan coil units (FCU) and variable refrigerant flow systems (VRF) Check ongoing validity of certificate online: www.eurovent-certification.com or using: www.certiflash.com

The present leaflet is drawn up by way of information only and does not constitute an offer binding upon Daikin Europe N.V.. Daikin Europe N.V. has compiled the content of this leaflet to the best of its knowledge. No express or implied warranty is given for the completeness, accuracy, reliability or fitness for particular purpose of its content and the products and services presented therein. Specifications are subject to change without prior notice. Daikin Europe N.V. explicitly rejects any liability for any direct or indirect damage, in the broadest sense, arising from or related to the use and/or interpretation of this leaflet. All content is copyrighted by Daikin Europe N.V.

BARCODE

Daikin products are distributed by: