

technical data



FDXS-EAVMB

**Concealed Ceiling,
Inverter Controlled Unit**

air conditioning systems

Split
Sky Air

TABLE OF CONTENTS

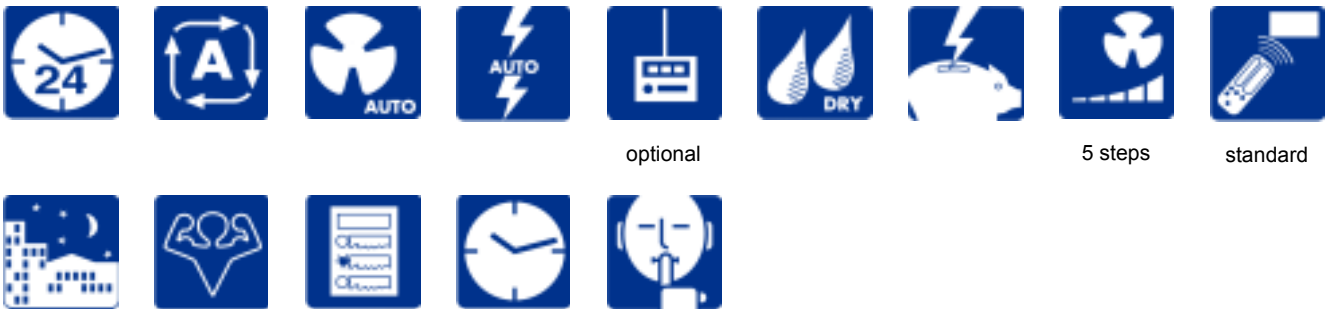
FDXS-EAVMB

1	Features	2
2	Specifications	3
	For indoor units only	3
	Technical Specifications	3
	Electrical Specifications	4
3	Dimensional drawing & centre of gravity	6
	Dimensional drawing	6
	Centre of gravity	7
4	Piping diagram	8
5	Sound data	9
	Sound pressure spectrum	9
6	Fan characteristics	10

1 Features

- Extremely quiet in operation
- Compact dimensions, can easily be mounted in a ceiling void
- You have the choice out of 5 fan speeds to select
- Daikin's special dry programme reduces humidity in the room without variation in room temperature
- Powerful mode can be selected for rapid cooling or heating
- Night set mode saves energy by preventing overcooling or overheating during night time
- Standard suction filter: removes airborne dust particles to ensure a steady supply of clean air
- Daikin remote controls give you easy control at your fingertips.

1



2 Specifications

2-1 FOR INDOOR UNITS ONLY			FDXS25EAVMB	FDXS35EAVMB
Nominal Input	Cooling	kW	0.071	0.071
	Heating	kW	0.071	0.071

2-2 TECHNICAL SPECIFICATIONS				FDXS25EAVMB	FDXS35EAVMB	
Dimensions	Packing	Height	mm	274	274	
		Width	mm	906	906	
		Depth	mm	751	751	
	Unit	Height	mm	200	200	
		Width	mm	700	700	
		Depth	mm	620	620	
Weight	Unit	kg	21.0	21.0		
	Packed Unit	kg	29.0	29.0		
Heat Exchanger	Dimensions	Length	mm	500	500	
		Nr of Rows		3	3	
		Fin Pitch	mm	1.50	1.50	
		Nr of Stages		12	12	
	Tube type	Hi-XSS (7)				
Fin	Type	ML fin (Multi louver)				
Fan	Type	Sirocco fan				
Air Flow Rate	Cooling	High	m³/min	8.7	8.7	
		Medium	m³/min	8.0	8.0	
		Low	m³/min	7.3	7.3	
		Silent Operation	m³/min	6.2	6.2	
	Heating	High	m³/min	8.7	8.7	
		Medium	m³/min	8.0	8.0	
		Low	m³/min	7.3	7.3	
		Silent Operation	m³/min	6.2	6.2	
Fan	Max	Standard	Pa	30	30	
	Motor	Quantity		1	1	
		Model	62C-23			
		Number of steps	5 steps, silent and auto			
Motor	Speed (cooling)	High	rpm	1270	1270	
		Medium	rpm	1180	1180	
		Low	rpm	1090	1090	
		Silent Operation	rpm	940	940	
	Speed (heating)	High	rpm	1270	1270	
		Medium	rpm	1180	1180	
		Low	rpm	1090	1090	
		Silent Operation	rpm	940	940	
Fan	Motor	Output (high)	W	62	62	
Cooling	Sound Power	High	dBA	53.0	53.0	
		Low	dBA	31.0	31.0	
	Sound Pressure	High	dBA	35.0	35.0	
		Medium	dBA	33.0	33.0	
		Silent Operation	dBA	29.0	29.0	
Heating	Sound Power	High	dBA	53.0	53.0	
		Low	dBA	31.0	31.0	
	Sound Pressure	High	dBA	35.0	35.0	
		Medium	dBA	33.0	33.0	
		Silent Operation	dBA	29.0	29.0	
Refrigerant	Type	R-410A				

2 Specifications

2

2-2 TECHNICAL SPECIFICATIONS				FDXS25EAVMB	FDXS35EAVMB
Piping connections	Liquid (OD)	Diameter (OD)	mm	6.35	6.4
	Gas	Diameter (OD)	mm	9.5	9.5
	Drain	Diameter (OD)	mm	I.D. 20/O.D. 26	
	Heat Insulation			Both liquid and gas pipes	
Air Filter				Removable/washable/Mildew proof	
Air direction control				Left, right, up and downwards	
Temperature control				Microcomputer control	
Standard Accessories	Item			Installation manual	
	Quantity			1 pc	
	Item			Operation manual	
	Quantity			1 pc	
	Item			Infrared remote control	
	Quantity			1pc	1 pc
	Item			Batteries	
	Quantity			2 pcs	
	Item			Remote control holder	
	Quantity			1 pc	
	Item			Fixing screw for remote control	
	Quantity			2 pcs	
	Item			Signal receiver cover kit	
	Quantity			1 set	
	Item			Insulation for fitting	
	Quantity			1 set	
	Item			Sealing pad	
	Quantity			1 set	
	Item			Clamp metal	
	Quantity			1 pc	
	Item			Drain hose	
	Quantity			1 pc	
	Item			Washer for hanger bracket	
	Quantity			8 pcs	
	Item			Sealing material	
	Quantity			2 pcs	
	Item			Clamps	
Quantity			6 pcs		
Item			Washer fixing plate		
Quantity			4 pcs		
Item			Screws for duct flanges		
Quantity			1 set		
Item			Air filter		
Quantity			1 pc		
Notes				Sound values are measured in an anechoic room.	
				Sound pressure level is a relative value, depending on the distance and acoustic environment. For more details, please refer to sound level drawings of this chapter.	
				The sound power level is an absolute value indicating the power which a sound source generates.	

2-3 ELECTRICAL SPECIFICATIONS				FDXS25EAVMB	FDXS35EAVMB
Power Supply	Name			VM	
	Phase			1	1
	Frequency		Hz	50/60	
	Voltage		V	220-240/220-230	
Current	Nominal running current (RLA)	Cooling	A	0.48	0.48
		Heating	A	0.48	0.48
Wiring connections	For Power Supply	Quantity	3		
		Remark	4 for interunit wiring (included earth wiring)		

4

2 Specifications

2-3 ELECTRICAL SPECIFICATIONS		FDXS25EAVMB	FDXS35EAVMB
Voltage range	Minimum	-10%	
	Maximum	+10%	
Power Supply Intake		Outdoor unit only	

3 Dimensional drawing & centre of gravity

3 - 1 Dimensional drawing

3

FDK/XS25-35E unit (mm)

Notes:

- In case of back-suction, mount chamber cover to bottom side of the unit.
In case of bottom-suction, mount chamber cover to back side of the unit.
- Location of unit's name plate: control box cover. (unit: mm).
- Mount the air filter at the suction side. (select its color method (gravity method) 50% or more).
It can not be equipped with air filter (accessory) when connecting duct to suction side.
- Pipe specification

Infrared receiver unit

16-M5 holes (all around)

In case of back suction

- Liquid pipe connection ϕ 6.4 (Flare connection)
- Gas pipe connection ϕ 9.5 (Flare connection)
- Socket for drain VP20 (O.D. ϕ 26 / I.D. ϕ 20)
- Drain hose (accessory) I.D. ϕ 25 (Outlet)
- Control box
- Infrared receiver unit connection
- Power supply connection
- Suspension bracket
- Air filter (accessory)
- Protection net

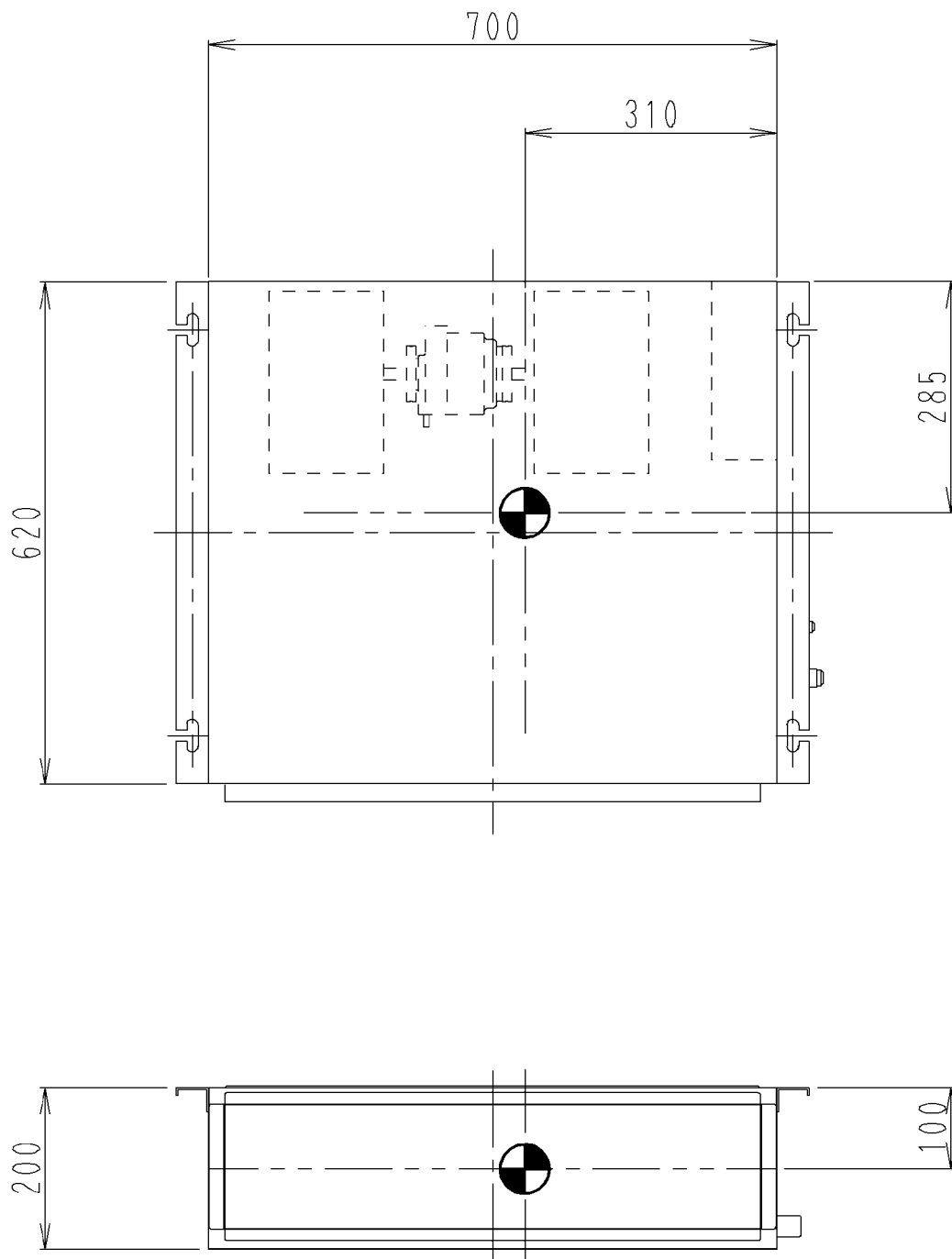
3D050379A

6

3 Dimensional drawing & centre of gravity

3 - 2 Centre of gravity

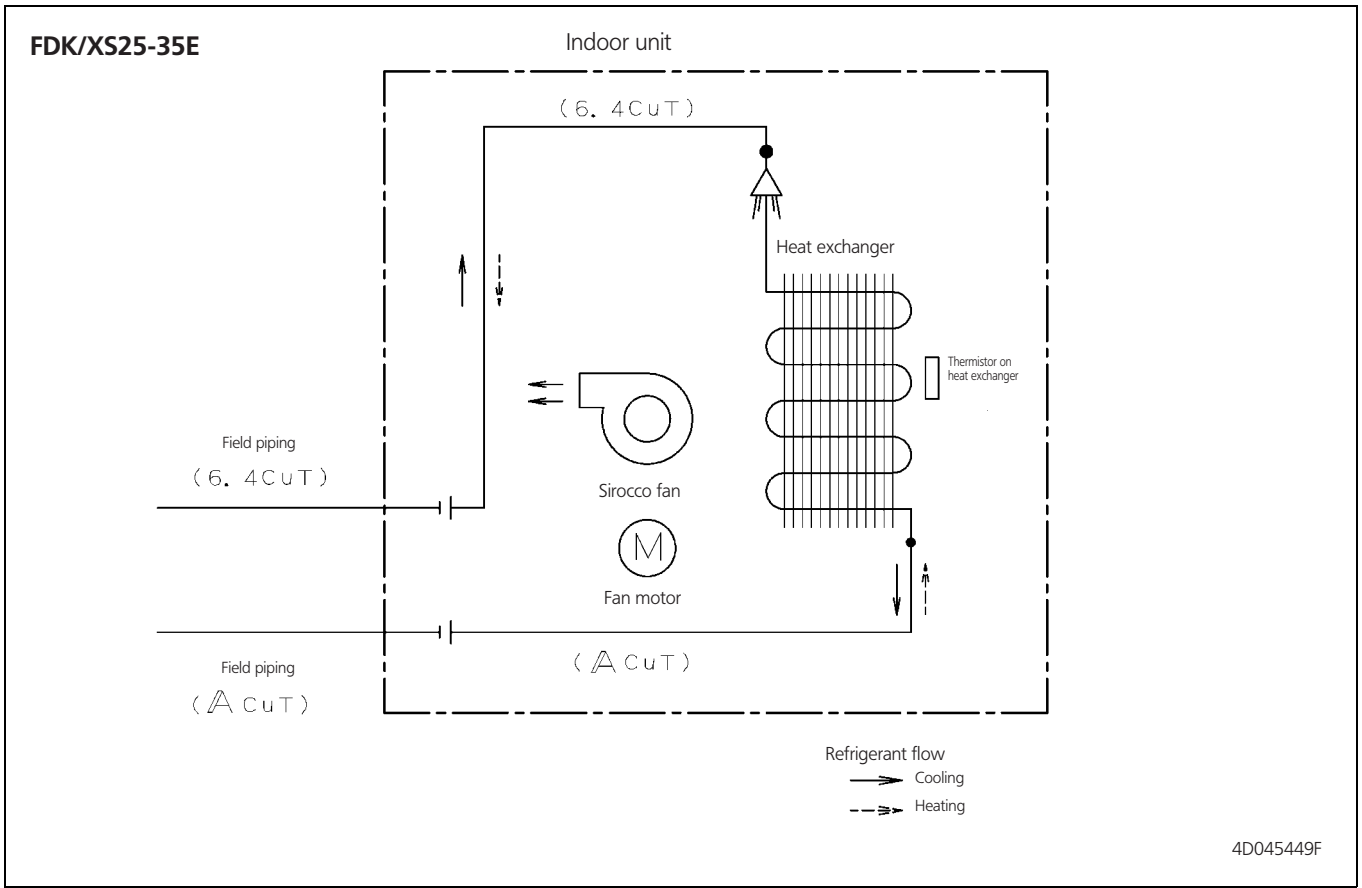
FDK/XS25-35E



4D049301B

4 Piping diagram

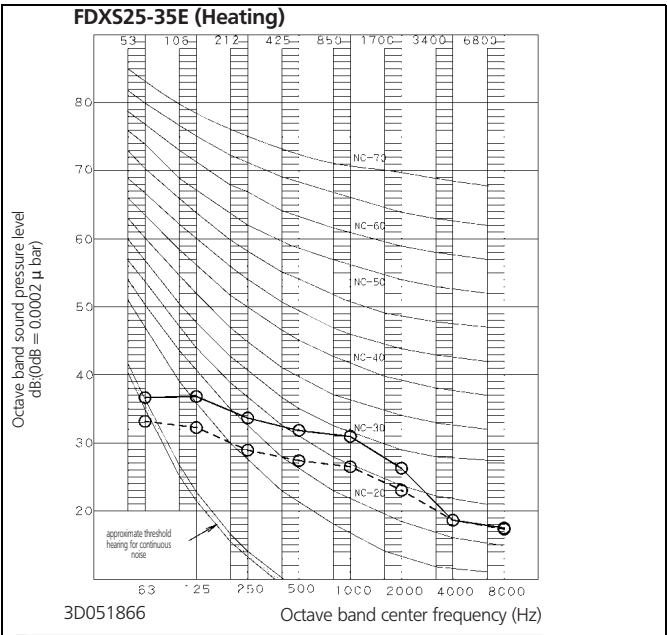
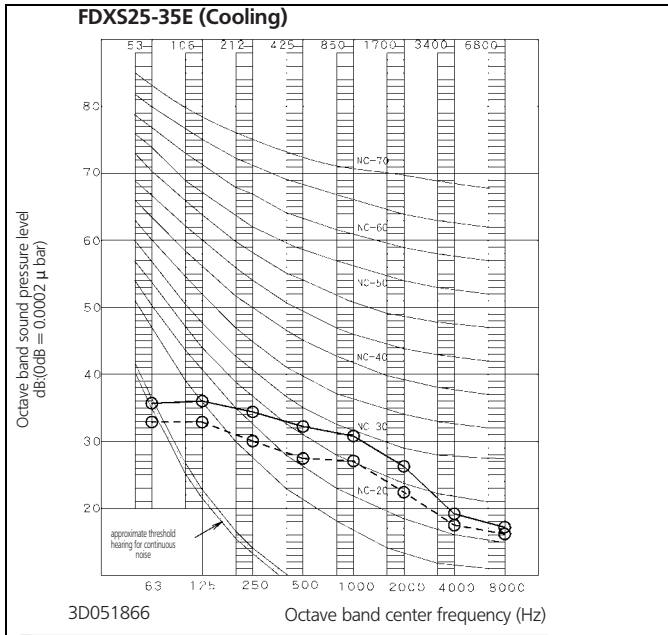
4



8

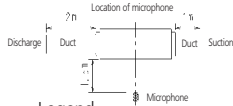
5 Sound data

5 - 1 Sound pressure spectrum



NOTES

- 1 Operation noise differs with operation and ambient conditions.
- 2 The operating sound is based on the rear side suction inlet, and the external static pressure 30Pa.

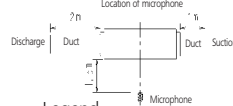


Legend

- (H) 220-240V/50Hz, 220-230V/60Hz
- (L) 220-240V/50Hz, 220-230V/60Hz

NOTES

- 1 Operation noise differs with operation and ambient conditions.
- 2 The operating sound is based on the rear side suction inlet, and the external static pressure 30Pa.

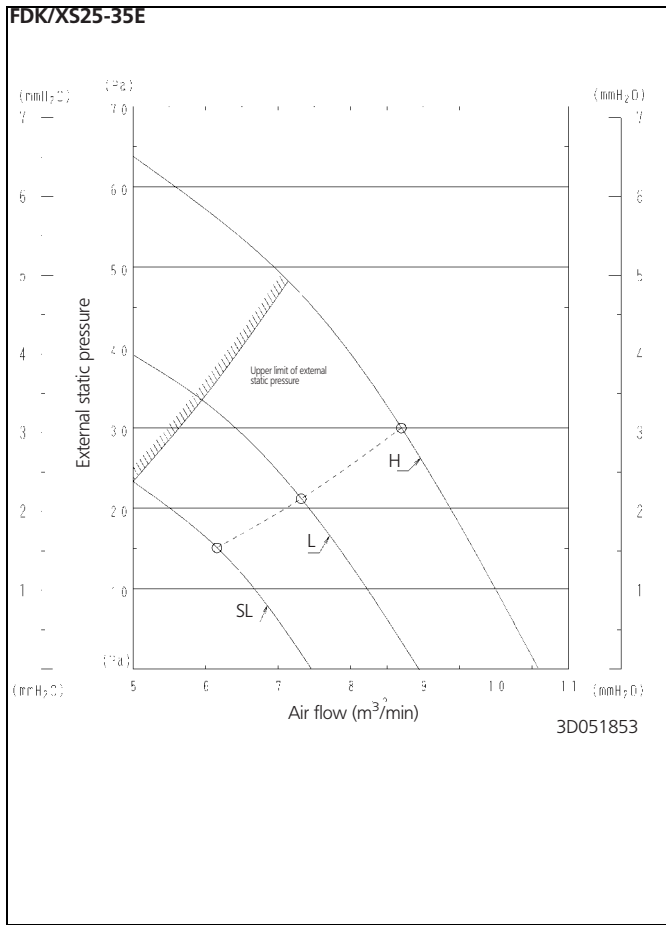


Legend

- (H) 220-240V/50Hz, 220-230V/60Hz
- (L) 220-240V/50Hz, 220-230V/60Hz

6 Fan characteristics

6



Split - Sky Air

The present publication is drawn up by way of information only and does not constitute an offer binding upon Daikin Europe N.V.. Daikin Europe N.V. has compiled the content of this publication to the best of its knowledge. No express or implied warranty is given for the completeness, accuracy, reliability or fitness for particular purpose of its content and the products and services presented therein. Specifications are subject to change without prior notice. Daikin Europe N.V. explicitly rejects any liability for any direct or indirect damage, in the broadest sense, arising from or related to the use and/or interpretation of this publication. All content is copyrighted by Daikin Europe N.V..



ISO14001 assures an effective environmental management system in order to help protect human health and the environment from the potential impact of our activities, products and services and to assist in maintaining and improving the quality of the environment.



Daikin units comply with the European regulations that guarantee the safety of the product.



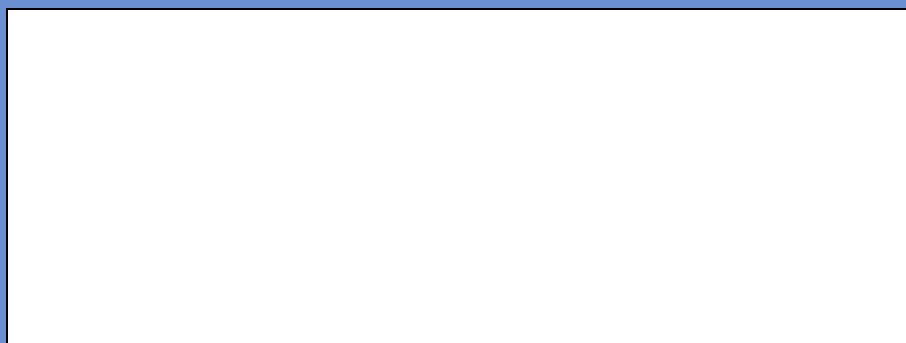
Daikin Europe N.V. is approved by LRQA for its Quality Management System in accordance with the ISO9001 standard. ISO9001 pertains to quality assurance regarding design, development, manufacturing as well as to services related to the product.



Daikin Europe N.V. is participating in the EUROVENT Certification Programme. Products are as listed in the EUROVENT Directory of Certified Products.

DAIKIN EUROPE N.V.

Zandvoordestraat 300
B-8400 Ostend - Belgium
www.daikineurope.com



EEDE06-1/3