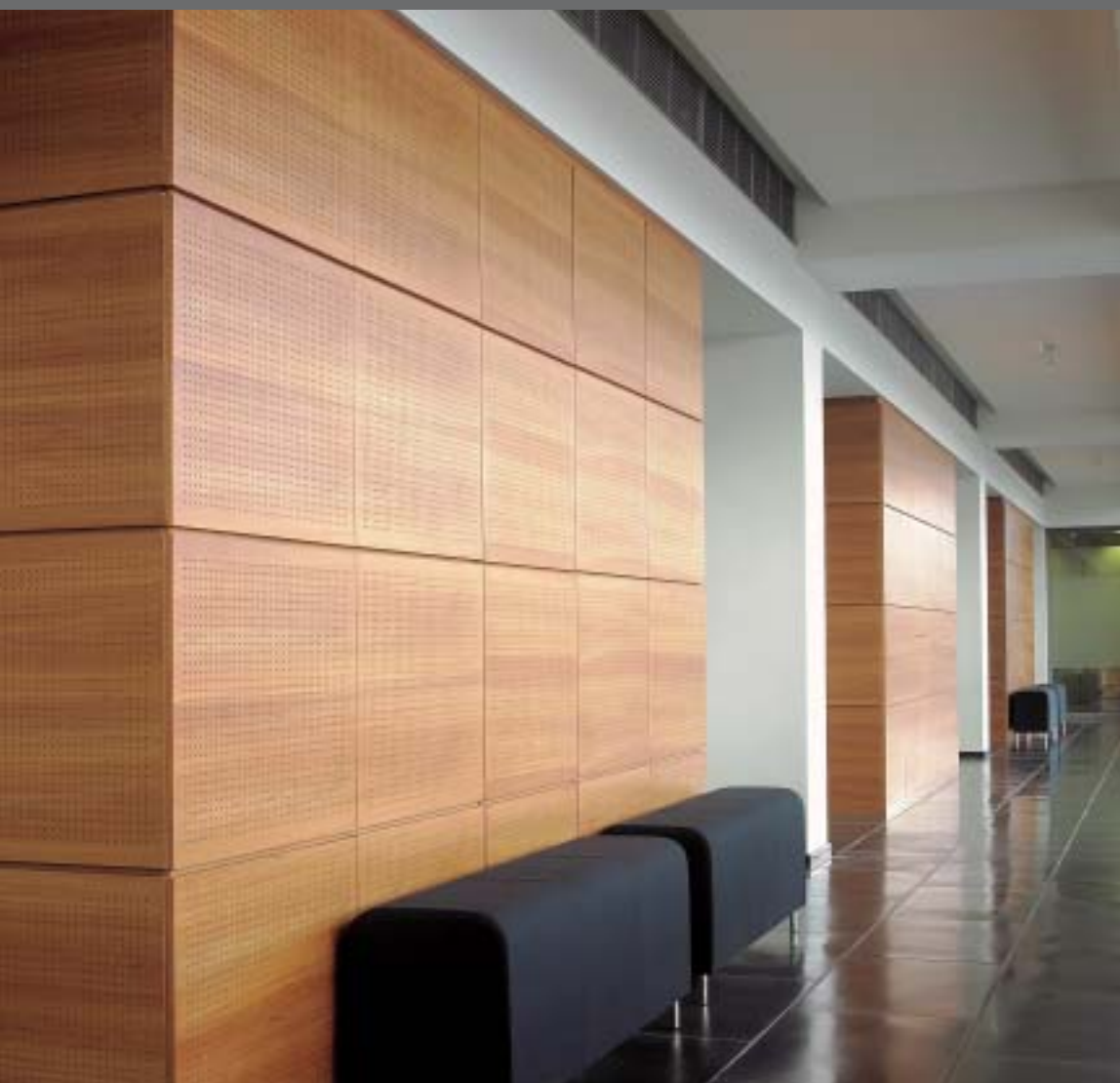


Daikin air conditioners  
for large spaces  
**concealed ceiling unit**

Daikin Airconditioning UK Ltd



www.daikin.co.uk

**FDQ-B7**





*Concealed ceiling units are built into the false ceiling, leaving only the suction and discharge grilles visible. Because the compact suction and discharge grilles can be placed wherever you want, they are ideal for achieving uniform temperature distribution in large and heavily partitioned areas.*

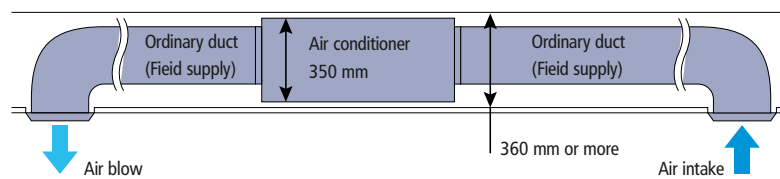
*Not only are concealed ceiling units visually the most unobtrusive, they are also among the quietest type of air conditioning.*

## COMFORT

- The indoor unit is **quiet in operation**. The sound levels are as low as 44dB(A), comparable to refrigerator humming or a quiet conversation.
- You can select a **high fan speed**, providing you maximum reach.
- The indoor unit contains an air **filter** which removes microscopic particles and dust.

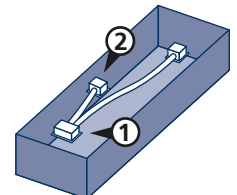
## FLEXIBLE INSTALLATION AND MAINTENANCE

- Since the indoor unit has a low height it fits flush into a narrow ceiling void. The installation of the unit only requires a **false ceiling** of only 360mm.



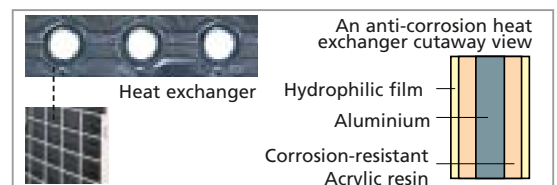
- The air discharge unit can be separated from the actual air conditioner for use in long or large areas by means of **flexible duct systems** (ESP up to 250Pa). In this way even very big areas can be kept comfortable.

- ① suction grille  
② discharge grille (field supply) of the flexible ducts



- The **outdoor unit** can be installed on a roof or terrace or placed against an outside wall.

- Special **anti-corrosion treatment** of the outdoor unit's heat exchanger fin, gives greater resistance against acid rain and salt corrosion. Additional resistance is provided by a rust proof steel sheet on the underside of the unit.



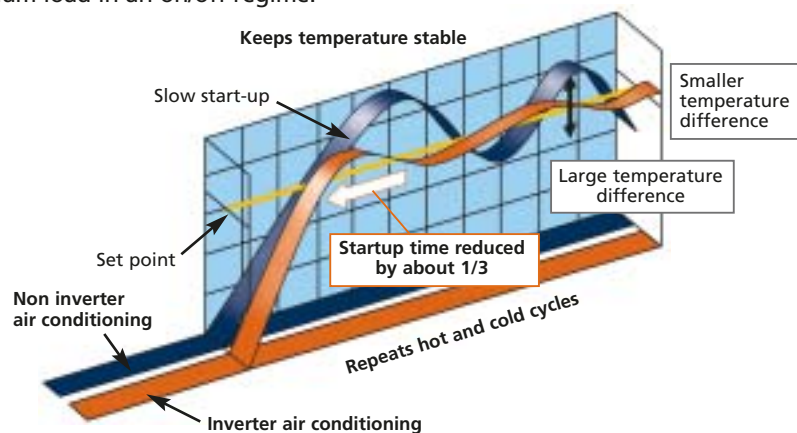


Wired remote control (Optional)

- Daikin **remote controls** give you easy control at your fingertips.
- The **wired remote control** provides you with a schedule timer, enabling the air conditioning to be programmed daily or weekly.
- The optional **remote ON/OFF** enables you to start/stop the air conditioning from a mobile phone via a telephone remote control (field supply).  
The optional **forced OFF** enables you to switch off the unit automatically. E.g. when a window is opened, the unit switches off.

## ENERGY EFFICIENT

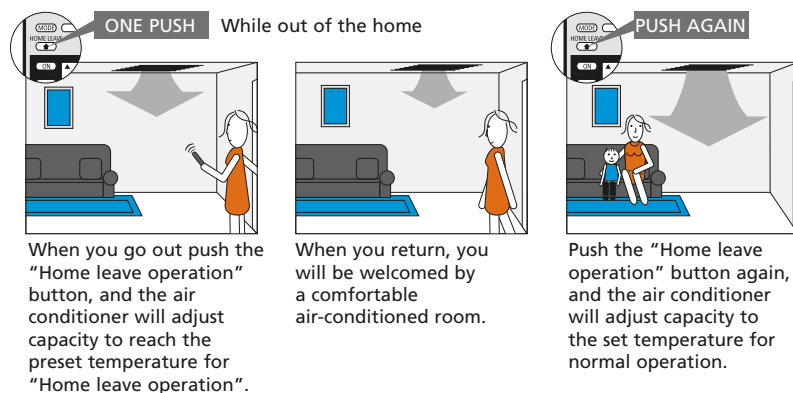
- Energy label: up to class A
- **Inverter technology**  
Improved energy efficiency:  
The use of integrated inverter control ensures maximum **energy efficiency** by supplying only the required heating or cooling load where a standard non inverter unit would supply maximum load in an on/off regime.



Improved comfort:

The rapid start up time provided by the inverter increases **comfort** by reducing the lead time in obtaining the required indoor temperature. As soon as the required temperature is reached, the inverter unit continuously scans the room for small changes and adjusts the room temperature in seconds, thereby increasing comfort once again.

- The **'home leave' operation** button prevents large temperature differences by continuously operating at a minimum (heating mode) or maximum (cooling mode) preset level while you're out or sleeping. It also allows the indoor temperature to return quickly to your favourite comfort level.



## APPLICATION OPTIONS

- This model can be used for **cooling only or heating**.
- It is possible to use the indoor unit in **pair** (connecting one indoor to one outdoor), **twin**, **triple**, **double twin** (connecting up to 4 indoors in the same room to a single outdoor).

## Capacity and power input

COOLING ONLY - NON INVERTER (air cooled)				FDQ125B7V3B				
				RR125B7W1B				
Cooling capacity	nominal		kW	12.50				
Nominal input	nominal		kW	4.79				
EER				2.61				
Energy label				D				
Annual energy consumption	cooling		kWh	2,395				
HEAT PUMP - NON INVERTER/INVERTER CONTROLLED (air cooled)				FDQ125B7V3B	FDQ125B7V3B	FDQ200B7V3B	FDQ250B7V3B	
				RQ125B7W1B	RZQ125B8V3B/B7W1B	RZQ200B7W1B	RZQ250B7W1B	
Cooling capacity	nominal		kW	12.50	12.50	20	25	
Heating capacity	nominal		kW	14.60	14	23	27	
Nominal input	cooling	nominal	kW	4.79	4.15	6.43	8.31	
	heating	nominal	kW	4.51	3.69	7.54	8.85	
EER				2.61	3.01	3.11	3.01	
COP				3.24	3.79	3.05	3.05	
Energy label	cooling			D	B	-	-	
	heating			C	A	-	-	
Annual energy consumption	cooling		kWh	2,395	2,075	-	-	

Notes:

- 1) Energy label: scale from A (most efficient) to G (less efficient).
- 2) Annual energy consumption: based on average use of 500 running hours per year full load (= nominal capacity).

## Specifications indoor units

COOLING ONLY/HEAT PUMP				FDQ125B7V3B	FDQ200B7V3B	FDQ250B7V3B
Dimensions		HxWxD	mm	350x1,400x662	450x1,400x900	
Weight			kg	59	93	93
Air flow rate	cooling	M	m³/min	43	69	89
	heating	M	m³/min	43	69	89
Fan speed				3 steps (direct drive)		2 steps (direct drive)
Sound pressure level	cooling	H	dB(A)	44	45	47
	heating	H	dB(A)	44	45	47
Sound power level	cooling	H	dB(A)	75	81	82
Piping connections		liquid	mm	ø9.52		ø12.7
		gas	mm	ø15.9	ø22.2	
		drain	mm	-	ø25	
Heat insulation				both liquid and gas pipes		

- Information is not available.

## Indoor units :



FDQ125B7



FDQ200-250B7





## Specifications outdoor units

COOLING ONLY - NON INVERTER			RR125B7W1B			
Dimensions	HxWxD	mm	1,170x900x320			
Weight		kg	106			
Casing colour			Ivory white			
Sound pressure level	H	dB(A)	53			
Sound power level	H	dB(A)	67			
Compressor			Hermetically scaled scroll type			
Refrigerant type			R-410A			
Refrigerant charge		kg/m	3.70			
Maximum piping length		m	70(equivalent length 90)			
Maximum level difference		m	30			
Operation range	from ~ to	°CDB	-15~46			
HEAT PUMP - NON INVERTER/INVERTER CONTROLLED			RQ125B7W1B	RZQ125B8V3B/B7W1B	RZQ200B7W1B	RZQ250B7W1B
Dimensions	HxWxD	mm	1,170x900x320	1,345x900x320	1,600x930x765	
Weight		kg	108	106	225	226
Casing colour			Ivory white	Ivory white		
Sound pressure level		dB(A)	53 (cooling - H)	50 (cooling - H) 45 (night quiet mode)	57	57
Sound power level		dB(A)	67 (cooling - H)	66 (cooling - H)	78	78
Compressor			Hermetically scaled scroll type	Hermetically scaled scroll type		
Refrigerant type			R-410A	R-410A		
Refrigerant charge		kg/m	3.70	4.3	8	9
Maximum piping length		m	70(equivalent length 90)	75 (equivalent length 95)	100	100
Maximum level difference		m	30	5	30	30
Operation range	cooling	from ~ to	°CDB	-5~46	-5~46	
	heating	from ~ to	°CWB	-10~15	-15~15	

## Accessories: control systems

INDOOR UNITS	FDQ125B7	FDQ200B7	FDQ250B7
Wired remote control		BRC1D527	
Central remote control		DCS302C51	
Unified ON/OFF control		DCS301B51	
Schedule timer		DST301B51	
Remote ON/OFF, forced OFF		EKRORO	

## Accessories

INDOOR UNITS	FDQ125B7	FDQ200B7	FDQ250B7
Wiring adapter for electrical appendices		KRP4A51	
Adapter for wiring (interlock for fresh air intake)		KRP1B54	
Interface adapter for Sky Air series		DTA112B51	
Option PCB for ext. electrical heater, humidifier and/or hour meter*		EKRP1B2	
Drain pump	-	EKDU125A51	

## Accessories

OUTDOOR UNITS	RR/RQ125B7	RZQ125B	RZQ200B	RZQ250B
Central drain plug	KKPJ5F180	KKPJ5F180	-	-
Central drain pan kit	-	-	KWC26B280	
Refrigerant branch piping	for twin	KHRQ22M20TA7	KHRQ22M20TA7	
	for triple	KHRQ127H7	KHRQ127H7	KHRQ250H7
	for double twin	-	KHRQ22M20TA7 (x3)	
Demand adapter kit	remote control of sound reduction and power input	-	KRP58M51	-

Notes:

- V1 = 1~, 230V, 50Hz; V3 = 1~, 230V, 50Hz
- Nominal cooling capacities are based on: indoor temperature 27°CDB/19°CWB • outdoor temperature 35°CDB • equivalent refrigerant piping length 75m • level difference 0m.
- Nominal heating capacities are based on: indoor temperature 20°CDB • outdoor temperature 7°CDB/6°CWB • equivalent refrigerant piping length 75m • level difference 0m.
- Capacities are net, including a deduction for cooling (an addition for heating) for indoor fan motor heat.
- The external static pressure is changeable: change the connectors inside the electrical box, this pressure means "high static pressure - standard - low static pressure".
- The external static pressure is changeable: change the connectors inside the electrical box, this pressure means "high static pressure - standard".
- Units should be selected on nominal capacity. Max. capacity is limited to peak periods.
- The sound pressure level is measured via a microphone at a certain distance from the unit (for measuring conditions: please refer to the technical data books).
- The sound power level is an absolute value indicating the "power" which a sound source generated.



Daikin's unique position as a manufacturer of air conditioning equipment, compressors and refrigerants has led to its close involvement in environmental issues. For several years Daikin has had the intention to become a leader in the provision of environmental friendly products. This challenge demands the eco design and development of a wide range of products and an energy management system; which involves energy conservation and reduction of waste.



Daikin Europe N.V. is approved by LRQA for its Quality Management System in accordance with the ISO9001 standard.

ISO9001 pertains to quality assurance regarding design, development, manufacturing as well as to services related to the product.



ISO14001 assures an effective environmental management system in order to help protect human health and the environment from the potential impact of our activities, products and services and to assist in maintaining and improving the quality of the environment.



Daikin units comply with the European regulations that guarantee the safety of the product.



Daikin Europe N.V. participates in the Eurovent Certification Programme for Air Conditioners (AC), Liquid Chilling Packages (LCP) and Fan Coil Units (FC); the certified data of certified models are listed in the Eurovent Directory.

Specifications are subject to change without prior notice.

#### Head office

**Daikin Airconditioning UK limited**  
1 River Court, Albert Drive, Woking, Surrey GU21 5RP  
Tel 01483 711810 Fax 01483 711890

#### Administration centres

4 Wells Place, Merstham, Redhill, Surrey RH1 3DR  
Tel 01737 732345 Fax 01737 644054

Airways, Midland Way, Thornbury, Bristol BS35 2JX  
Tel 01454 281000 Fax 01454 415199

1 Wellington Road, Bishopbriggs, Glasgow G64 2SA  
Tel 0845 6021122 Fax 0845 6052233

Daikin products are distributed by:

