

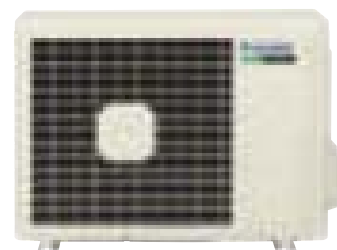
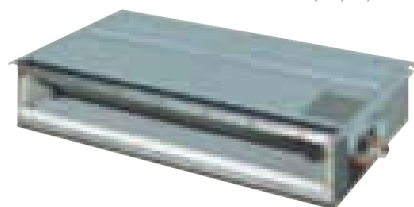


FDKS-C / RKS-D CDKS-C / MKS-D

Slim concealed ceiling unit

CDKS25,35,50,60C

RKS25,35D



- Slim design for flexible installation
- Compact dimensions: can easily be mounted in a ceiling void of only 240 mm
- Blends unobtrusively with any interior décor
- Can be installed in both new and existing buildings
- Leaves maximum floor and wall space for furniture, decorations and fittings
- Powerful mode can be selected for rapid cooling
- The home leave operation saves energy during absence

- Standard suction filter: removes airborne dust particles to ensure a steady supply of clean air
- Indoor unit silent operation
- Outdoor unit silent operation
- Night quiet mode (only in multi application and cooling only mode)
- Medium external static pressure facilitates unit use with flexible ducts of varying lengths



COOLING ONLY

INDOOR UNIT			NEW	NEW	CDKS50CVMB	CDKS60CVMB
Cooling capacity	min ~ nom ~ max	kW	FDKS25CVMB	FDKS35CVMB	For more detailed information about capacities, power input, EER and annual energy consumption, please refer to our Multi Model catalogue/combination tables or check with your local dealer.	
Nominal input	min ~ nom ~ max	kW	13 ~ 24 ~ 3.0	14 ~ 34 ~ 3.8		
EER			0.30 ~ 0.845 ~ 1.06	0.30 ~ 1.30 ~ 1.455		
Energy label			2.84	2.62		
Annual energy consumption	cooling	kWh	C	D	200x900x620	
Dimensions	HxWxD	mm	423	650		
Weight		kg				
Air flow rate	H/L/SL	m³/min				
Sound pressure level	H/L/SL	dB(A)	9.5 ~ 8.0 ~ 6.7	10.0 ~ 8.5 ~ 7.0	27	30
Sound power level	H	dB(A)	35/31/29	35/31/29	12.0/10.0/8.4	16.0/13.5/11.2
Refrigerant type			53	53	37/33/31	38/34/32
Power supply	VM				55	56
Infrared remote control						
			R-410A		R-410A	
			1 ~, 220-240/220-230V, 50/60Hz		1 ~, 220-240/220-230V, 50/60Hz	
			ARC433A8		ARC433A8	

Notes: 1) Energy label: scale from A (most efficient) to G (less efficient).
2) Annual energy consumption: based on average use of 500 running hours per year full load (= nominal capacity).
3) The Energy Label Directive 2002/31/EC will enter into force once the relevant measurement standard will be published in the European Official Standard.

OUTDOOR UNIT			RKS25DVMB		RKS35DVMB		4MKS58,75,90DVMB	
Dimensions	HxWxD	mm	550x765x285				Multi application only. For more specifications please refer to page 98 of this catalogue.	
Weight		kg	30					
Sound pressure level	H/L	dB(A)	46/43		47/44			
Sound power level	H	dB(A)	61		61			
Operation range	from ~ to	°CDB	-10 ~ 46					
Refrigerant type			R-410A					
Power supply		VM	1 ~ 220-240/220-230V, 50/60Hz					